

## Product datasheet for **SP3004P**

### Blnk Rabbit Polyclonal Antibody

#### Product data:

Product Type:	Primary Antibodies
Applications:	WB
Recommended Dilution:	Western Blot: Resuspend approx. 50 µl cells in 1 ml cold Lysis buffer (1% laurylmaltoside in 20 mM Tris/Cl, 100 mM NaCl pH 8.2, 50 mM NaF including Protease inhibitor Cocktail). Incubate 60 min on ice. Centrifuge to remove cell debris. Mix lysate with reducing Laemmli SDS-PAGE sample buffer. Application note: Reducing conditions.
Reactivity:	Mouse
Host:	Rabbit
Clonality:	Polyclonal
Immunogen:	Fusion protein of human BLNK
Specificity:	The antibody reacts with BLNK, a cytosolic protein identified as two phosphoproteins migrating at 68 and 70 kDa in SDS/PAGE (alternatively spliced forms of human BLNK).
Formulation:	PBS, pH 7.4, containing 15 mM sodium azide as preservative. State: Purified State: Liquid Serum
Concentration:	lot specific
Purification:	Precipitation methods; purity < 95% (by SDS-PAGE)
Conjugation:	Unconjugated
Storage:	Store the antibody undiluted at 2-8°C for one month or (in aliquots) at -20°C for longer. Avoid repeated freezing and thawing.
Stability:	Shelf life: one year from despatch.
Gene Name:	B cell linker
Database Link:	<a href="#">Entrez Gene 17060 Mouse Q9QUN3</a>



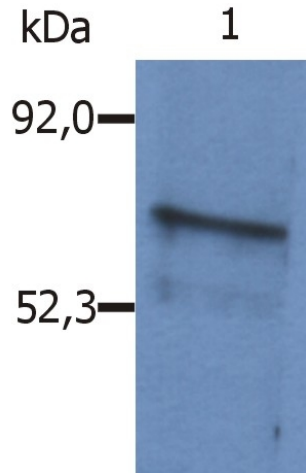
[View online »](#)

**Background:**

SLP65 / BLNK (SH2 domain-containing leukocyte-specific phosphoprotein of 65 kDa; B cell linker protein), also known as BASH, is an adaptor protein that plays key role in B cell activation initiated by cross-linking the B cell receptor (BCR). Phosphorylated by Syk tyrosine kinase, SLP65 serves as a scaffold for Btk tyrosine kinase, Vav1 guanine nucleotide exchange factor, phospholipase C $\alpha$ 2, as well as Grb2 and Nck adaptor proteins; thus represents a central linker protein that bridges the BCR-associated kinases with a multitude of signaling pathways.

**Synonyms:**

BASH, SLP65, SLP-65

**Product images:**

Western Blotting analysis (reducing conditions) of whole cell lysate of Sp2/0 mouse myeloma cell line using polyclonal anti-mouse SLP65 / BLNK antibody.