

## Product datasheet for **SP3001P**

### LIME (LIME1) Rabbit Polyclonal Antibody

#### Product data:

Product Type:	Primary Antibodies
Applications:	IHC, WB
Recommended Dilution:	Western blot. Immunohistochemistry on paraffin sections.
Reactivity:	Human
Host:	Rabbit
Clonality:	Polyclonal
Immunogen:	Bacterially expressed intracellular fragment corresponding to aa 141-295 of human LIME
Specificity:	This antibody reacts with the cytoplasmic domain of LIME, a 31 kDa Lck-interacting transmembrane adaptor expressed by T cells.
Formulation:	Phosphate buffered saline (PBS) with 15 mM sodium azide, approx. pH 7.4 State: Purified State: Liquid Ig fraction
Concentration:	lot specific
Purification:	By precipitation methods; purity: > 95% (by SDS-PAGE)
Conjugation:	Unconjugated
Storage:	Store the antibody at 2 - 8 °C up to one month or (in aliquots) at -20 °C for longer. Avoid repeated freezing and thawing.
Stability:	Shelf life: one year from despatch.
Gene Name:	Lck interacting transmembrane adaptor 1
Database Link:	<a href="#">Entrez Gene 54923 Human Q9H400</a>



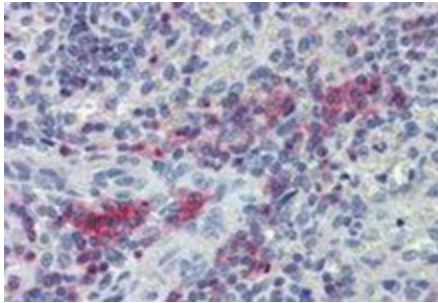
[View online »](#)

**Background:**

LIME (Lck-interacting molecule) is a 31 kDa double-palmitoylated protein with unusually basic cytoplasmic domain, expressed by T cells. After ligation of CD4 or CD8 T cell coreceptors, LIME is phosphorylated by Src-family kinases and associates with Lck and Fyn kinases and with their negative regulator Csk. Interestingly, Csk-mediated phosphorylation of C-terminal negative-regulatory tyrosine of LIME-associated Lck can result in increase of enzymatic activity compared with the total pool of Lck, thus, LIME serves as a positive regulator of TCR-dependent T cell signaling. However, under some circumstances, LIME may mediate inhibitory signals.

**Synonyms:**

LIME1, LIME, LIME-1, Lck-interacting membrane protein, Lck-interacting molecule, Lck-interacting transmembrane adapter 1

**Product images:**

Immunohistochemistry staining of human spleen (paraffin sections) with anti-LIME polyclonal antibody.