

Product datasheet for **SP3000P**

SLP76 (LCP2) Rabbit Polyclonal Antibody

Product data:

Product Type:	Primary Antibodies
Applications:	IHC, WB
Recommended Dilution:	Western blot. Positive control: JURKAT human T cell leukemia cell lysate. Sample preparation: Resuspend approx. 50 mil. cells in 1 ml cold Lysis buffer (1% laurylmaltoside in 20 mM Tris/Cl, 100 mM NaCl pH 8.2, 50 mM NaF including Protease inhibitor Cocktail). Incubate 60 min on ice. Centrifuge to remove cell debris. Mix lysate with reducing Laemmli SDS-PAGE sample buffer. Application note: Reducing conditions. Immunohistochemistry on paraffin sections: 10 µg/ml. Positive tissue: thymus.
Reactivity:	Human
Host:	Rabbit
Clonality:	Polyclonal
Immunogen:	A fusion protein representing amino acids 216-434 of human SLP-76
Specificity:	The antibody reacts with SLP76, a 76 kDa cytosolic adaptor protein that is involved in signaling of various hematopoietic cells, such as T cells, mast cells or neutrophils; in B cells, however, it is replaced by SLP65.
Formulation:	Phosphate buffered saline (PBS) with 15 mM sodium azide, approx. pH 7.4 State: Purified State: Liquid Ig fraction
Concentration:	lot specific
Purification:	By precipitation methods; purity: > 95% (by SDS-PAGE)
Conjugation:	Unconjugated
Storage:	Store the antibody at 2 - 8 °C up to one month or (in aliquots) at -20 °C for longer. Avoid repeated freezing and thawing.
Stability:	Shelf life: one year from despatch.
Gene Name:	lymphocyte cytosolic protein 2



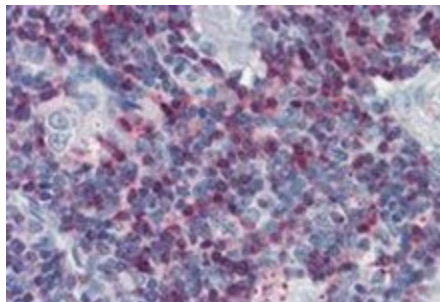
[View online »](#)

Database Link: [Entrez Gene 3937 Human Q13094](#)

Background: SLP76 (SH2 domain-containing leukocyte protein of 76 kDa) is a cytosolic adaptor protein which translocates to the plasma membrane and is involved in multiple signaling pathways in T cells, mast cells, neutrophils and platelets; B cells express its analog SLP65/BLNK (B cell linker protein). SLP76 is phosphorylated by Syk-family and Tec-family tyrosine kinases and couples them to the phosphorylation and activation of PLC-g. Via Gads or Grb2, SLP76 also associates with LAT adaptor by involvement of SLP76 proline-rich region. The SH2 domain of SLP76 has been identified as the region involved in binding the serine/threonine kinase HPK1. HPK1 may act as both a positive and a negative regulator by promoting the Jnk-mitogen activated protein kinase (MAPK) pathway and inhibiting the pathway leading to AP-1 activation.

Synonyms: LCP2, Lymphocyte cytosolic protein 2, SLP-76 tyrosine phosphoprotein, SLP76

Product images:



Immunohistochemistry staining of human thymus (paraffin sections) with anti-SLP76 polyclonal.