

## Product datasheet for **SP2170P**

### MCL1 Rabbit Polyclonal Antibody

#### Product data:

Product Type:	Primary Antibodies
Applications:	IF, WB
Recommended Dilution:	Western blot: 0.5-1.0 µg/ml. This antibody detects a band of approximately 30 kDa and 38 kDa in Human Raji cell lysates. Immunocytochemistry.
Reactivity:	Human
Host:	Rabbit
Clonality:	Polyclonal
Immunogen:	A 16 amino acid peptide located near the centre of human MCL-1
Specificity:	This antibody recognizes an epitope within the central region (IN) of Myeloid cell leukaemia sequence 1 (MCL-1). SP2170P recognises both the MCL-1L (38kDa) and MCL-1S (30kDa) isoforms of MCL-1.
Formulation:	PBS containing 0.02% Sodium Azide as preservative. State: Purified State: Liquid purified IgG fraction.
Concentration:	lot specific
Purification:	Ion Exchange Chromatography.
Conjugation:	Unconjugated
Storage:	Store the antibody undiluted at 2-8°C for one month or (in aliquots) at -20°C for longer. Avoid repeated freezing and thawing.
Stability:	Shelf life: one year from despatch.
Gene Name:	myeloid cell leukemia 1
Database Link:	<a href="#">Entrez Gene 4170 Human Q07820</a>



[View online »](#)

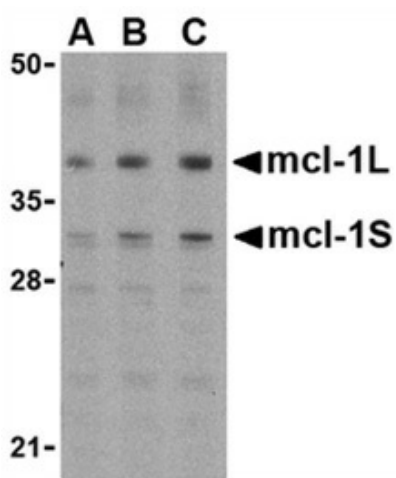
**Background:**

MCL-1 is an anti-apoptotic member of the Bcl-2 family of proteins, first identified in differentiating ML-1 myeloid cells, and expressed in many different cell lines, tissues and a variety of tumours.

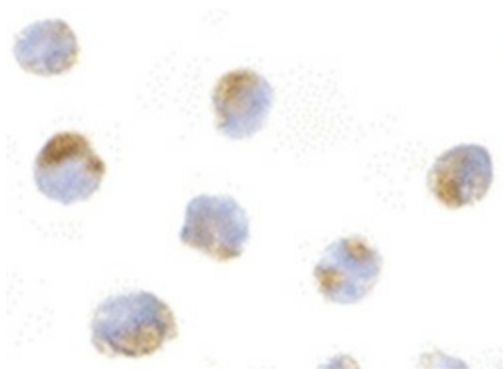
The MCL-1 protein, localised to intracellular membranes and particularly mitochondrial membranes, has since been isolated in two distinct isoforms, known as MCL-1 long (MCL-1L) and MCL-1 short (MCL-1S). MCL-1S has been identified as a pro-apoptotic splice variant of MCL-1L, missing the transmembrane and BH1 and BH2 (Bcl-2 homology) domains. Interaction between these two antagonistic variants can act to regulate cell survival.

**Synonyms:**

BCL2L3, Bcl-2-like protein 3, mcl1/EAT, EAT, r004

**Product images:**


Western blot analysis of whole cell lysate from Raji, Burkitt's lymphoma derived B-lymphoblastoid cells probed with Rabbit anti Human Mcl-1 at 0.5 (A), 1 (B) and 2 (C) ug/ml



Immunocytochemical staining of Raji cells with Rabbit anti Human Mcl-1