

Product datasheet for **SP2146P**

Caspase 1 (CASP1) (C-term) Rabbit Polyclonal Antibody

Product data:

Product Type:	Primary Antibodies
Applications:	IHC, WB
Recommended Dilution:	Western blot: 0.5 µg - 1.0 µg/ml. Immunohistochemistry on paraffin sections: 0.5 µg - 1.0 µg/ml; This product does not require protein digestion pre-treatment of paraffin embedded sections e.g. trypsin or pronase prior to staining. Recommended Positive Control: Human heart tissue.
Reactivity:	Human
Host:	Rabbit
Clonality:	Polyclonal
Immunogen:	A 16 amino acid peptide located near human Caspase-1 carboxy terminus.
Specificity:	This antibody recognises an epitope within the C-terminal region (CT) of Caspase-1, otherwise known as IL-1Beta converting enzyme. This antibody detects a cleaved subunit band of approximately 21 kDa in heart cell lysates (predicted precursor MWT 45.2kDa).
Formulation:	PBS containing 0.02% Sodium Azide State: Purified State: Liquid purified IgG
Concentration:	lot specific
Purification:	Affinity chromatography
Conjugation:	Unconjugated
Storage:	Store the antibody undiluted at 2-8°C for one month or (in aliquots) at -20°C for longer. Avoid repeated freezing and thawing.
Stability:	Shelf life: one year from despatch.
Gene Name:	caspase 1
Database Link:	Entrez Gene 834 Human P29466



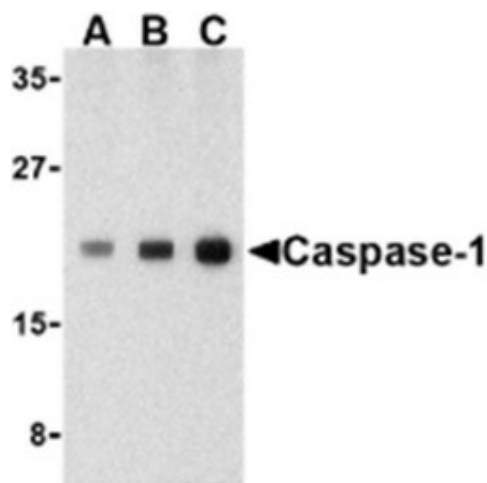
[View online »](#)

Background:

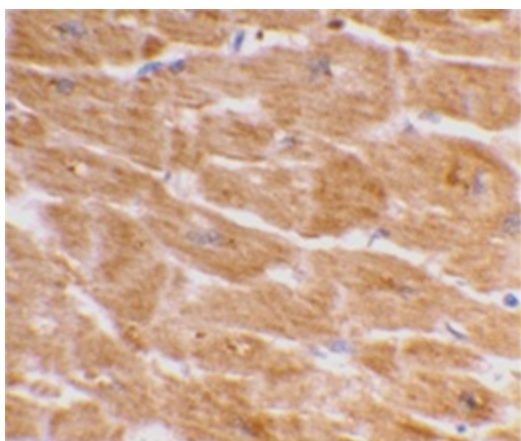
Caspase-1 is an intracellular cysteine protease, identified as a mammalian homologue to *C. elegans* cell death gene (*ced-3*). Caspase-1 has been classified as an inflammatory, rather than apoptotic caspase, due to its essential role in the cleavage of the inactive precursors of the cytokines IL-1 β and IL-18, into their mature activated and secretable forms. This regulation of pro-inflammatory cytokines by Caspase-1 has made inhibitors of Caspase-1 a possible target for use as therapeutic drugs for the treatment of inflammatory diseases.

Synonyms:

CASP-1, CASP1, IL1BC, IL1BCE, ICE, p45

Product images:


Western blot analysis of human heart lysate probed with Rabbit anti Human caspase-1 at 0.5 (A), 1 (B) and 2 (C) ug/ml



Immunohistochemical staining of human heart with Rabbit anti Human caspase-1