

## Product datasheet for **SP2116P**

### **Bim (BCL2L11) (N-term) Rabbit Polyclonal Antibody**

#### **Product data:**

Product Type:	Primary Antibodies
Applications:	IHC, WB
Recommended Dilution:	<b>Western blot:</b> 1/1000. Detects a band of approximately 22kDa in K562 and A549 whole cell lysates. <b>Immunohistochemistry on Paraffin Sections:</b> Requires antigen retrieval using heat treatment prior to staining of paraffin sections. Sodium citrate buffer pH 6.0 is recommended for this purpose.
Reactivity:	Human, Mouse, Rat
Host:	Rabbit
Isotype:	IgG
Clonality:	Polyclonal
Immunogen:	Synthetic peptide corresponding to amino acids 22 to 40 of Human Bim
Specificity:	This antibody is specific for Bcl-2 interacting mediator of cell death (Bim), also known as Bod.
Formulation:	State: Aff - Purified State: Liquid purified IgG fraction Preservative: 0.02% Sodium Azide
Concentration:	lot specific
Purification:	Affinity Chromatography
Conjugation:	Unconjugated
Storage:	Store undiluted at 2-8°C for up to one month or (in aliquots) at -20°C for longer. Avoid repeated freezing and thawing.
Stability:	Shelf life: one year from despatch.
Gene Name:	BCL2 like 11
Database Link:	<a href="#">Entrez Gene 10018 Human O43521</a>



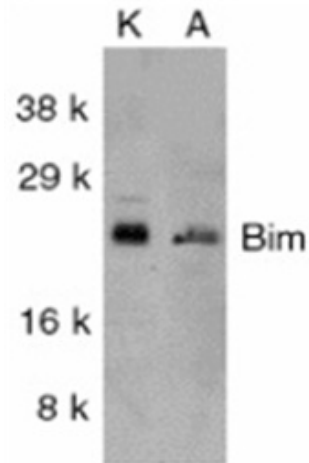
[View online »](#)

**Background:**

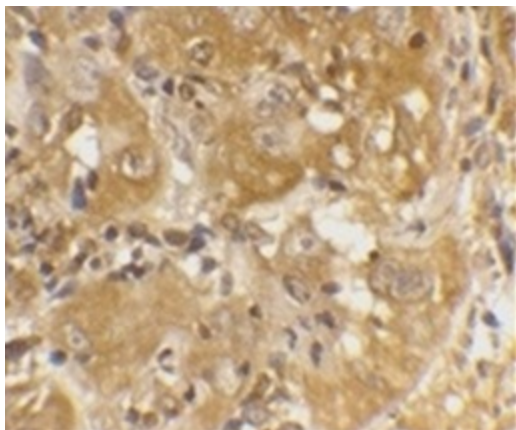
Bim is a pro-apoptotic protein within the Bcl-2 family, which functions within the intrinsic apoptosis pathway. Bim is known to interact with pro-survival proteins including Bcl-2, Bcl-XL and Bcl-w. Bim is expressed in a variety of cell types, where it is maintained in an inactive conformation by phosphorylation or through binding to the microtubule-associated dynein motor complex. Upon certain apoptotic stimuli, Bim is released from microtubules and mediates caspase-dependent apoptosis.

**Synonyms:**

Bcl2-L-11, BCL2L11, BIM, BimEL, BimL, BimS

**Product images:**


Western blot analysis of whole cell lysates from K562 (K) and A549 (A) cells probed with Rabbit anti BIM antibody Cat.-No SP2116P



Immunohistochemical staining of human skin with Rabbit anti BIM antibody Cat.-No SP2116P