

Product datasheet for **SP2103P**

GDNF Receptor alpha 2 (GFRA2) Rabbit Polyclonal Antibody

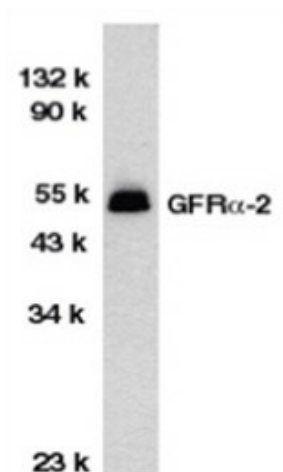
Product data:

Product Type:	Primary Antibodies
Applications:	IF, WB
Recommended Dilution:	Western blot: 1/1000. Immunocytochemistry.
Reactivity:	Human, Mouse, Rat
Host:	Rabbit
Clonality:	Polyclonal
Immunogen:	Synthetic peptide from C-terminus of human GFR alpha-2
Specificity:	This antibody recognises the cell surface receptor for neurturin, which was recently designated as GFR alpha-2.
Formulation:	PBS containing 0.02% Sodium Azide State: Purified State: Liquid purified IgG
Concentration:	lot specific
Purification:	Ion exchange chromatography
Conjugation:	Unconjugated
Storage:	Store the antibody undiluted at 2-8°C for one month or (in aliquots) at -20°C for longer. Avoid repeated freezing and thawing.
Stability:	Shelf life: one year from despatch.
Gene Name:	GDNF family receptor alpha 2
Database Link:	Entrez Gene 2675 Human O00451
Background:	Neurturin is a member of the GDNF family, and has an important role in the control of vertebrate neuron survival and differentiation. GRF alpha-2 is a 52kD glycoprotein, and is a GPI-linked cell surface receptor.
Synonyms:	GFR-alpha-2, Neurturin receptor alpha, GDNF receptor beta, RET ligand 2, GDNFRB, RETL2, TRNR2

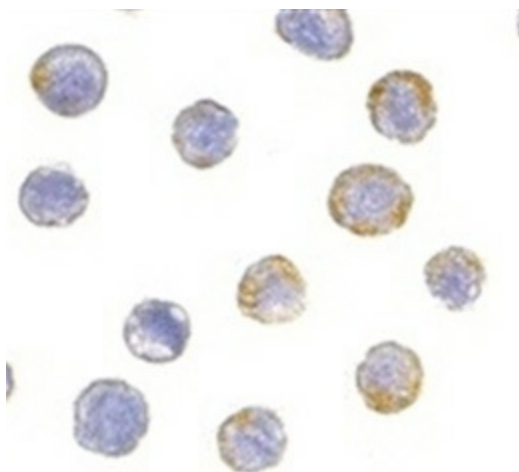


[View online »](#)

Product images:



Western blot analysis of HeLa total cell lysate probed with Rabbit anti Human GFR alpha 2



Immunocytochemical staining of HeLa cells with Rabbit anti Human GFR alpha 2