

## Product datasheet for **SP2080P**

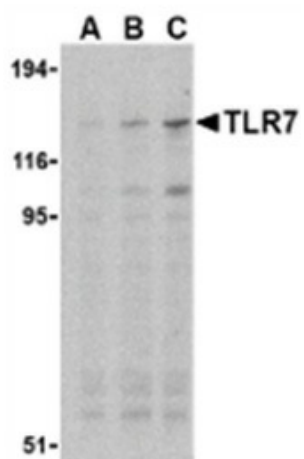
### TLR7 Rabbit Polyclonal Antibody

#### Product data:

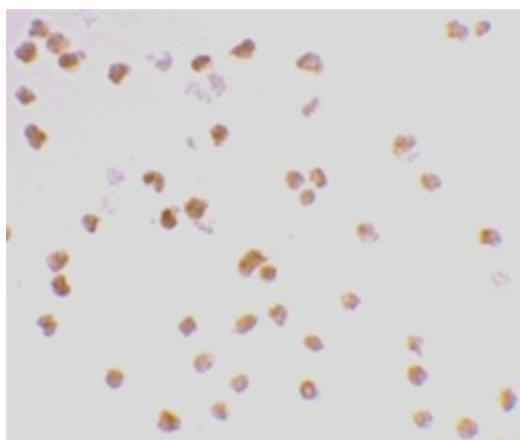
|                       |   |
|-----------------------|---|
| Product Type:         | Primary Antibodies  |
| Applications:         | IF, WB  |
| Recommended Dilution: | <b>Western blot:</b> 0.5-2.0 µg/ml.<br><b>Immunocytochemistry.</b>  |
| Reactivity:           | Human, Mouse  |
| Host:                 | Rabbit  |
| Clonality:            | Polyclonal  |
| Immunogen:            | Synthetic peptide corresponding to a 14 amino acid sequence within mouse TLR7.  |
| Specificity:          | This antibody is specific for Toll-like receptor 7 (TLR7).  |
| Formulation:          | PBS containing 0.02% Sodium Azide<br>State: Purified<br>State: Liquid purified IgG fraction   |
| Concentration:        | lot specific  |
| Purification:         | Ion exchange chromatography   |
| Conjugation:          | Unconjugated  |
| Storage:              | Store undiluted at 2-8°C for one month or (in aliquots) at -20°C for longer.<br>Avoid repeated freezing and thawing.  |
| Stability:            | Shelf life: one year from despatch.   |
| Gene Name:            | toll like receptor 7  |
| Database Link:        | <a href="#">Entrez Gene 51284 Human Q9NYK1</a>  |
| Background:           | TLR7 is thought to play a role in the innate immune response to viral pathogens. Mouse TLR7 is localized in endosomal compartments, and recognises single stranded RNA viruses. Stimulation of TLR7 causes a type I IFN response, in a MyD88 dependent pathway. |
| Synonyms:             | Toll-like receptor 7  |



[View online »](#)

**Product images:**

Western blot analysis of whole cell lysates from Daudi B lymphoblastoid cells probed with Rabbit anti TLR7



Immunocytochemical staining of Daudi cells with Rabbit anti Human TLR7