

Product datasheet for **SP1412P**

Endo G (ENDOG) Rabbit Polyclonal Antibody

Product data:

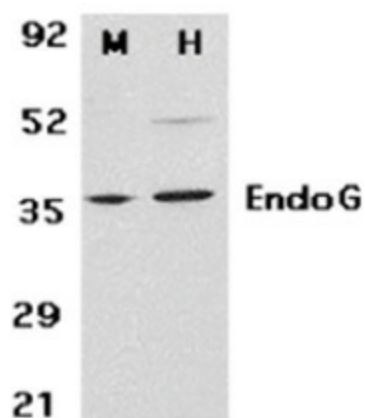
Product Type:	Primary Antibodies
Applications:	IHC, WB
Recommended Dilution:	Western blot: 1 µg/ml - 2 µg/ml; this antibody detects a band of approximately 35kDa in HepG2 and 3T3 cell lysates. Immunohistochemistry on paraffin sections: 15 µg/ml; Sodium citrate buffer pH6.0 is recommended for this purpose. Recommended Positive Control: Human pancreas.
Reactivity:	Human, Mouse, Rat
Host:	Rabbit
Clonality:	Polyclonal
Immunogen:	Synthetic peptide corresponding to amino acids 55 - 70 of endonuclease G.
Specificity:	This antibody recognises endonuclease G (endoG).
Formulation:	PBS containing 0.09% Sodium Azide State: Purified State: Liquid purified IgG
Concentration:	lot specific
Purification:	Affinity chromatography
Conjugation:	Unconjugated
Storage:	Store the antibody undiluted at 2-8°C for one month or (in aliquots) at -20°C for longer. Avoid repeated freezing and thawing.
Stability:	Shelf life: one year from despatch.
Gene Name:	endonuclease G
Database Link:	Entrez Gene 2021 Human Q14249
Background:	Endonuclease G is a mitochondrion-specific nuclease that translocates to the nucleus and cleaves chromatin DNA during apoptosis. endoG is reported to act independently of caspases and may represent a caspase independent apoptotic pathway initiated from the mitochondria.



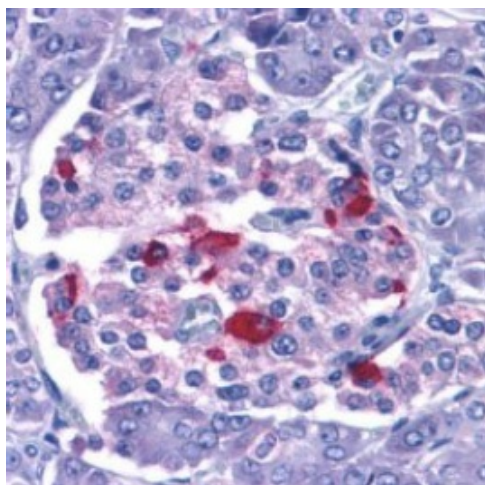
[View online »](#)

Synonyms: ENDOG

Product images:



Western blot analysis of whole cell lysates from mouse 3T3 (M) and Human HepG2 (H) cells probed with Rabbit anti endonuclease G



EndoG - staining of human pancreas with anti-EndoG at 15 ug/ml. Formalin fixed paraffin processed tissue.