

Product datasheet for **SP1410P**

Bcl2 Binding component 3 (BBC3) alpha isoform Rabbit Polyclonal Antibody

Product data:

Product Type:	Primary Antibodies
Applications:	IHC, WB
Recommended Dilution:	Western blot: 2-4 µg/ml. Detects a band of approximately 23kDa in K562 cell lysates. Immunohistochemistry on Paraffin Sections: 10 µg/ml. Antigen retrieval using heat treatment prior to staining of paraffin sections is recommended (Sodium citrate buffer pH6.0). <i>Recommended Positive Control:</i> Human breast carcinoma.
Reactivity:	Human, Mouse
Host:	Rabbit
Isotype:	IgG
Clonality:	Polyclonal
Immunogen:	Synthetic peptide corresponding to the N-terminus of Human PUMA alpha.
Specificity:	This antibody recognises the p53 - upregulated modulator of apoptosis (PUMA), also known as Bcl-2 binding component 3.
Formulation:	PBS State: Purified State: Liquid purified IgG fraction Preservative: 0.02% Sodium Azide
Concentration:	lot specific
Purification:	Affinity Chromatography
Conjugation:	Unconjugated
Storage:	Store undiluted at 2-8°C for one month or (in aliquots) at -20°C for longer. Avoid repeated freezing and thawing.
Stability:	Shelf life: one year from despatch.
Gene Name:	BCL2 binding component 3
Database Link:	Entrez Gene 27113 Human Q96PG8

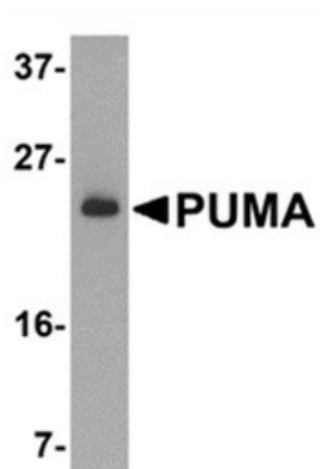


[View online »](#)

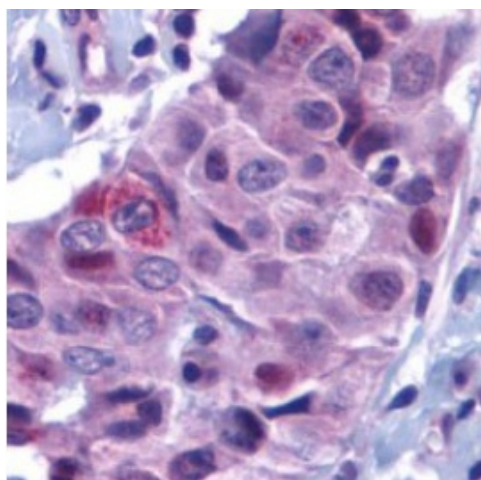
Background: PUMA is a proapoptotic member of the BCL-2 family. PUMA is localised to the mitochondria, binds BCL-2 and induces cytochrome C release and apoptosis in response to p53.

Synonyms: BBC3, JFY-1

Product images:



Western blot analysis of whole cell lysate from K562 cells probed with Rabbit anti Human PUMA Antibody



Formalin Fixed, Paraffin Human breast carcinoma sections stained with PUMA Antibody at 10 ug/ml.