

## Product datasheet for **SP1337P**

### DC SIGN (CD209) (277-293) Rabbit Polyclonal Antibody

#### Product data:

Product Type:	Primary Antibodies
Applications:	IF, IHC, WB
Recommended Dilution:	<b>Western Blot:</b> 1-2 µg/ml. This antibody detects a band of approximately 44 kDa. <b>Immunofluorescence.</b> <b>Immunohistochemistry on Frozen Sections.</b>
Reactivity:	Human
Host:	Rabbit
Clonality:	Polyclonal
Immunogen:	Synthetic peptide corresponding to amino acids 277-293 of Human CD209/DC-SIGN.
Specificity:	This antibody recognizes an epitope within the extracellular domain of CD209/DC-SIGN.
Formulation:	PBS State: Aff - Purified State: Liquid purified IgG fraction Preservative: 0.02% Sodium Azide
Concentration:	lot specific
Purification:	Affinity Chromatography
Conjugation:	Unconjugated
Storage:	Store undiluted at 2-8°C for one month or (in aliquots) at -20°C for longer. Avoid repeated freezing and thawing.
Stability:	Shelf life: one year from despatch.
Gene Name:	CD209 molecule
Database Link:	<a href="#">Entrez Gene 30835 Human Q9NNX6</a>



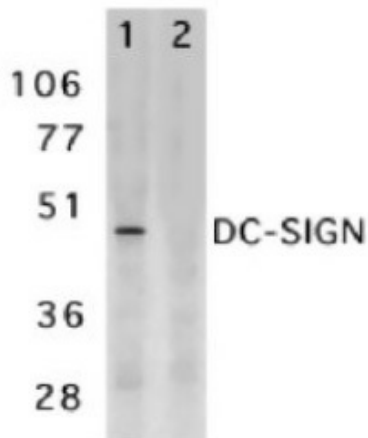
[View online »](#)

**Background:**

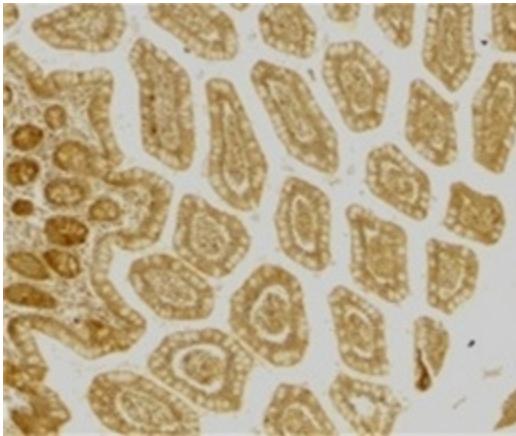
Dendritic cells (DCs) that control immune responses were recently found to capture and transport HIV from the mucosal area to remote lymph nodes, where DCs hand over HIV to CD4+ T lymphocytes. DCs also amplify the amount of virus and extend the duration of viral infectivity. Multiple strains of HIV1, HIV2 and SIV bind to DCs via DCSIGN. ICAM3 is the natural ligand for DC-SIGN. A DC-SIGN homologue (termed CD299, DC-SIGNR, L-SIGN and DCSIGN2) was identified recently. DC-SIGN forms a novel gene family with DC-SIGNR and many alternatively spliced isoforms of DC-SIGN and DC-SIGNR. The expression of DC-SIGN was found in mucosal tissues including placenta, small intestine, and rectum.

**Synonyms:**

DCSIGN1, DCSIGN, DC-SIGN1, CLEC4L, Dendritic Cell Marker

**Product images:**

Western blot analysis of DC-SIGN/CD209 expression in human placenta tissue lysate in the absence (Lane 1) and presence (Lane 2) of blocking peptide with CD209 antibody.



Immunohistochemical staining of human small intestine with Rabbit anti Human CD209 antibody.