

Product datasheet for **SP1202P**

SIRP alpha (SIRPA) (C-term) Rabbit Polyclonal Antibody

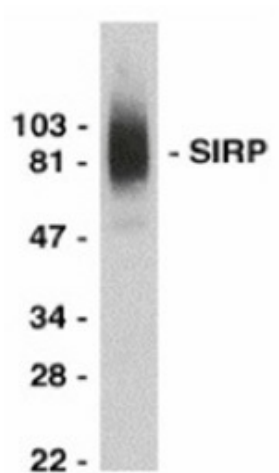
Product data:

Product Type:	Primary Antibodies
Applications:	IF, WB
Recommended Dilution:	Western blot: 1/1000-1/2000. Immunocytochemistry.
Reactivity:	Human
Host:	Rabbit
Isotype:	IgG
Clonality:	Polyclonal
Immunogen:	Peptide from C terminus of human SIRP alpha 1
Specificity:	This antibody recognises signal regulatory protein (SIRP) alpha.
Formulation:	PBS containing 0.02% Sodium Azide State: Purified State: Liquid purified IgG fraction
Concentration:	lot specific
Purification:	Ion Exchange Chromatography
Conjugation:	Unconjugated
Storage:	Store the antibody undiluted at 2-8°C for one month or (in aliquots) at -20°C for longer. Avoid repeated freezing and thawing.
Stability:	Shelf life: one year from despatch.
Gene Name:	signal regulatory protein alpha
Database Link:	Entrez Gene 140885 Human P78324
Background:	CD172a is a recently cloned glycoprotein which is a substrate of many activated tyrosine kinases.
Synonyms:	SHP substrate 1, SHPS-1, Sirp-alpha-2, Sirp-alpha-3, MyD-1 antigen, p84, BIT, MFR, MYD1, PTPNS1, SHPS1



[View online »](#)

Product images:



Western blot analysis of THP-1 whole cell lysate probed with Rabbit anti Human CD172a



Immunocytochemical staining of THP-1 cells with Rabbit anti Human CD172a