

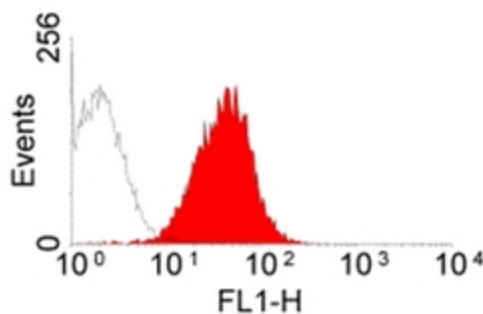
## Product datasheet for **SP1041F**

### Mouse IgG (H+L chain), adsorbed Goat Polyclonal Antibody

#### Product data:

|                       |   |
|-----------------------|---|
| Product Type:         | Secondary Antibodies  |
| Product Name:         | Mouse IgG (H+L chain), adsorbed Goat Polyclonal Antibody  |
| Applications:         | FC  |
| Recommended Dilution: | <b>Flow Cytometry:</b> Use 50µl of 1/50-1/200 diluted antibody to label 10 <sup>6</sup> cells in 100 µl.  |
| Reactivity:           | Mouse   |
| Host:                 | Goat  |
| Immunogen:            | Mouse IgG   |
| Formulation:          | PBS containing 0.09% Sodium Azide and 1% Bovine Serum Albumin<br>Label: FITC<br>State: Liquid purified IgG fraction<br>Label: Fluorescein Isothiocyanate Isomer 1                                       |
| Concentration:        | lot specific  |
| Purification:         | Affinity Chromatography   |
| Conjugation:          | FITC  |
| Storage:              | Store the antibody undiluted at 2-8°C for one month or (in aliquots) at -20°C for longer.<br>This product is photosensitive and should be protected from light.<br>Avoid repeated freezing and thawing. |

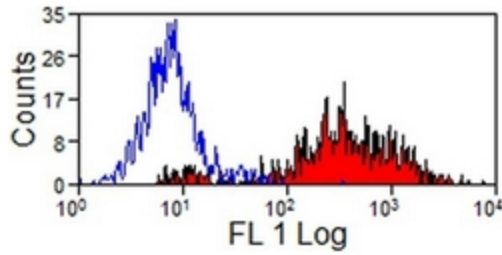
#### Product images:



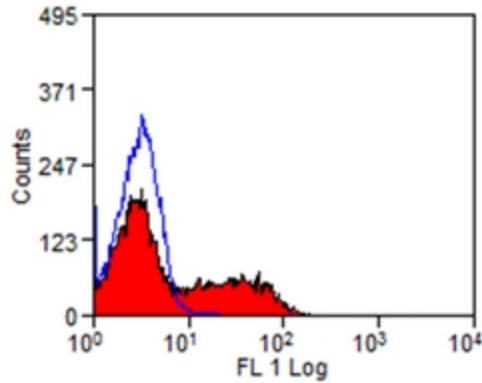
Detection of Mouse anti Rat RT1Ac Antibody in a Flow Cytometric analysis of BN Rat spleen cells using Goat anti Mouse IgG Antibody -FITC Cat.-No SP1041F



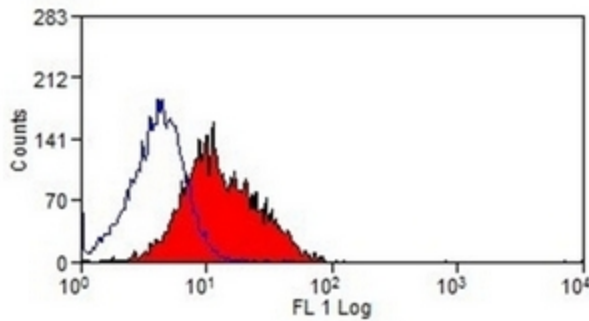
[View online »](#)



Detection of Mouse anti Porcine SLA Class II DR Antibody Cat.-No [AM05887PU-S] in a flow cytometric analysis of porcine peripheral blood monocytes using Goat anti Mouse IgG Antibody - FITC Cat.-No SP1041F



Detection of Mouse anti Bovine CD40 Antibody in a Flow Cytometric analysis of bovine peripheral blood lymphocytes using Goat anti Mouse IgG Antibody -FITC Cat.-No SP1041F



Detection of Mouse anti Bovine CD80 Antibody in a flow cytometric analysis of bovine peripheral blood monocytes using Goat anti Mouse IgG Antibody -FITC Cat.-No SP1041F