

Product datasheet for **SM6037S**

Nucleophosmin (NPM1) (81-294) Mouse Monoclonal Antibody [Clone ID: 5E3]

Product data:

Product Type:	Primary Antibodies
Clone Name:	5E3
Applications:	ELISA, FC, IF, IHC, WB
Recommended Dilution:	ELISA. Western blot (1/1,000-1/2,000). Immunohistochemistry on paraffin-embedded sections (1/100). Immunocytochemistry / Immunofluorescence. Flow Cytometry.
Reactivity:	Human
Host:	Mouse
Isotype:	IgG2b
Clonality:	Monoclonal
Immunogen:	Recombinant human NPM (81-294 aa) purified from <i>E. coli</i>
Specificity:	The antibody recognizes Human NPM at aa 81-294. Other species not tested.
Formulation:	PBS, pH 7.4 containing 0.02% Sodium Azide and 10% Glycerol State: Purified State: Liquid purified Ig fraction
Concentration:	lot specific
Purification:	Protein-G affinity chromatography
Conjugation:	Unconjugated
Storage:	Store undiluted at 2-8°C for up to two weeks or (in aliquots) at -20°C for longer. Avoid repeated freezing and thawing.
Stability:	Shelf life: one year from despatch.
Gene Name:	nucleophosmin (nucleolar phosphoprotein B23, numatrin)
Database Link:	Entrez Gene 4869 Human P06748



[View online »](#)

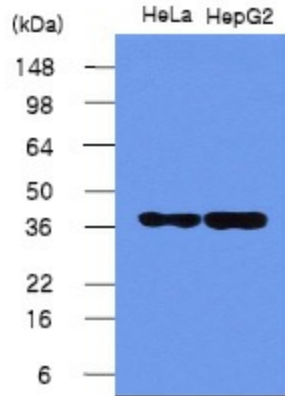
Background:

Nucleophosmin (NPM; also known as B23, NO38, or numatrin) is a nucleolar phosphoprotein that binds the tumor suppressors p53 and p19Arf and is thought to be indispensable for ribogenesis, cell proliferation, and survival after DNA damage. Nucleophosmin is upregulated in many cancer cells.

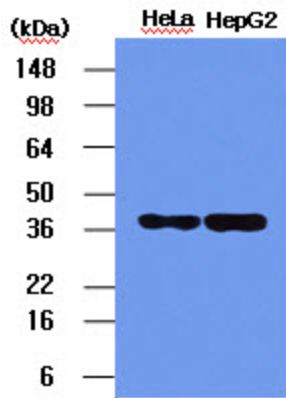
Synonyms:

NPM, NPM1, Numatrin

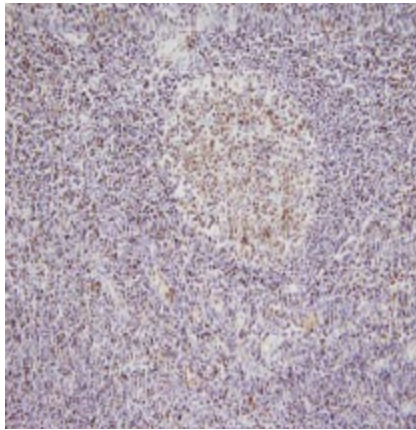
Product images:



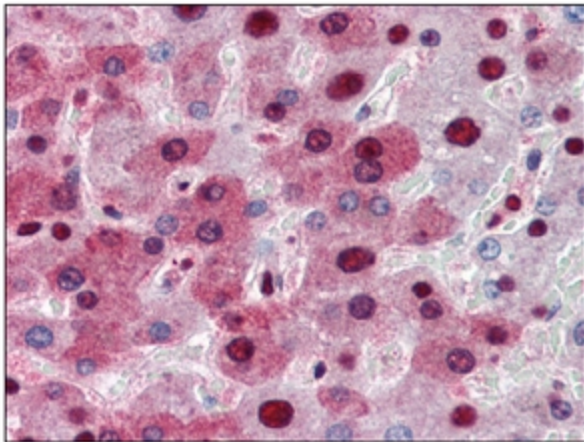
The HeLa and HepG2 cell lysates (5ug) were resolved by SDS-PAGE, transferred to PVDF membrane and probed with anti-human NPM (1:1,000). Proteins were visualized using a goat anti-mouse secondary antibody conjugated to HRP and an ECL detection system.



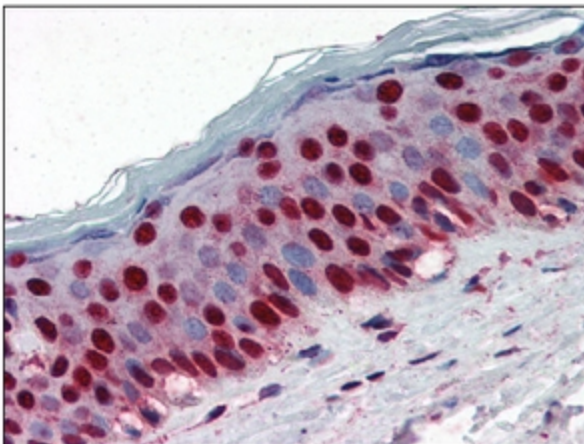
Western blot analysis: HeLa and HepG2 cell lysates (5 ug) were resolved by SDS-PAGE, transferred to PVDF membrane and probed with anti-human NPM antibody (1/1000). Proteins were visualized using a goat anti-mouse secondary antibody conjugated to HRP and an ECL detection system.



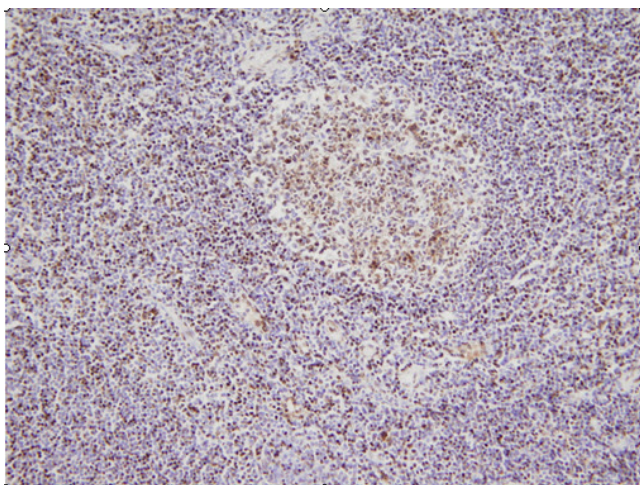
Immunohistochemistry: NPM antibody staining of Formalin-Fixed, Paraffin-Embedded Human Liver at 5 ug/ml followed by biotinylated anti-Mouse IgG secondary antibody, Alkaline Phosphatase-Streptavidin and chromogen.



Immunohistochemistry: NPM antibody staining of Formalin-Fixed, Paraffin-Embedded Human Skin at 5 ug/ml followed by biotinylated anti-Mouse IgG secondary antibody, Alkaline Phosphatase-Streptavidin and chromogen.



This image shows paraffin-embedded human palatine tonsil tissue sample stained with anti-NPM antibody (5E3) at 1:100 dilution.



Immunohistochemistry: NPM antibody staining of Paraffin-Embedded Human Palatine Tonsil Tissue at 1/100 dilution.