

## Product datasheet for **SM6035S**

### **PIN1 Mouse Monoclonal Antibody [Clone ID: 3G8]**

#### **Product data:**

Product Type:	Primary Antibodies
Clone Name:	3G8
Applications:	ELISA, FC, WB
Recommended Dilution:	<b>ELISA.</b> <b>Western blot:</b> 1/500-1/1,000 (Recommended starting dilution is 1/500). <b>Flow Cytometry.</b>
Reactivity:	Human
Host:	Mouse
Isotype:	IgG1
Clonality:	Monoclonal
Immunogen:	Recombinant Human Pin1 (1-163 aa) purified from <i>E. coli</i>
Specificity:	This antibody is specific for Human Pin1. Other species not tested.
Formulation:	PBS, pH 7.4 containing 0.02% Sodium Azide and 10% Glycerol State: Purified State: Liquid purified IgG fraction
Concentration:	lot specific
Purification:	Affinity Chromatography on Protein G
Conjugation:	Unconjugated
Storage:	Store undiluted at 2-8°C for up to two weeks or (in aliquots) at -20°C for longer. Avoid repeated freezing and thawing.
Stability:	Shelf life: one year from despatch.
Gene Name:	peptidylprolyl cis/trans isomerase, NIMA-interacting 1
Database Link:	<a href="#">Entrez Gene 5300 Human Q13526</a>



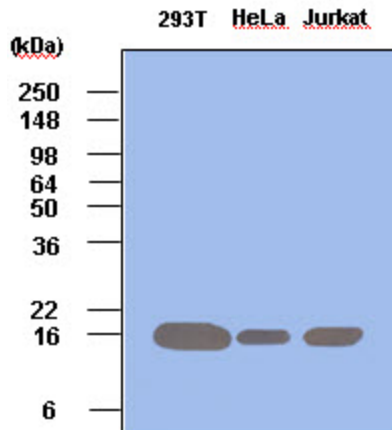
[View online »](#)

**Background:**

Human Pin1 is a peptidyl-prolyl cis/trans isomerase (PPIase) that interacts with NIMA and essential for cell cycle regulation. Pin1 is nuclear PPIase containing a WW protein interaction domain, and is structurally and functionally related to Ess1/Ptf1, an essential protein in budding yeast. PPIase activity is necessary for Ess1/Pin1 function in yeast. Pin1 is thus an essential PPIase that regulates mitosis presumably by interacting with NIMA and attenuating its mitosis-promoting activity. Substrates of Pin1 include the mitotic regulators (Cdc25 phosphatase and NIMA, PLK I, Wee, and Myt1 kinases), several transcription factors like beta-Catenin, c-Jun, and the tumor suppressor protein p53, and some specific proteins like the RNA Pol II, the cytoskeleton protein tau, and the G1/S protein Cyclin D1.

**Synonyms:**

PIN-1

**Product images:**

Western Blot: Cell lysates of 293T, HeLa and Jurkat (each 50ug) were resolved by SDS-PAGE, transferred to PVDF membrane and probed with anti-human Pin1 (1:500). Proteins were visualized using a goat anti-mouse secondary antibody conjugated to HRP and an ECL detection system.