

Product datasheet for **SM6035**

PIN1 Mouse Monoclonal Antibody [Clone ID: 3G8]

Product data:

| | |
|-----------------------|--|
| Product Type: | Primary Antibodies |
| Clone Name: | 3G8 |
| Applications: | ELISA, FC, WB |
| Recommended Dilution: | ELISA. Western blot: 1/500-1/1,000 (Recommended starting dilution is 1/500). Flow Cytometry. |
| Reactivity: | Human |
| Host: | Mouse |
| Isotype: | IgG1 |
| Clonality: | Monoclonal |
| Immunogen: | Recombinant Human Pin1 (1-163 aa) purified from <i>E. coli</i> |
| Specificity: | This antibody is specific for Human Pin1. Other species not tested. |
| Formulation: | PBS, pH 7.4 containing 0.02% Sodium Azide and 10% Glycerol State: Purified State: Liquid purified IgG fraction |
| Concentration: | lot specific |
| Purification: | Affinity Chromatography on Protein G |
| Conjugation: | Unconjugated |
| Storage: | Store undiluted at 2-8°C for up to two weeks or (in aliquots) at -20°C for longer. Avoid repeated freezing and thawing. |
| Stability: | Shelf life: one year from despatch. |
| Gene Name: | peptidylprolyl cis/trans isomerase, NIMA-interacting 1 |
| Database Link: | Entrez Gene 5300 Human Q13526 |



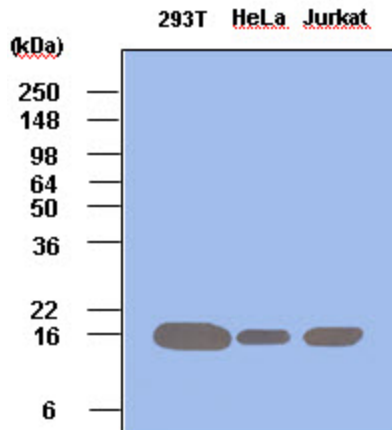
[View online »](#)

Background:

Human Pin1 is a peptidyl-prolyl cis/trans isomerase (PPIase) that interacts with NIMA and essential for cell cycle regulation. Pin1 is nuclear PPIase containing a WW protein interaction domain, and is structurally and functionally related to Ess1/Ptf1, an essential protein in budding yeast. PPIase activity is necessary for Ess1/Pin1 function in yeast. Pin1 is thus an essential PPIase that regulates mitosis presumably by interacting with NIMA and attenuating its mitosis-promoting activity. Substrates of Pin1 include the mitotic regulators (Cdc25 phosphatase and NIMA, PLK I, Wee, and Myt1 kinases), several transcription factors like beta-Catenin, c-Jun, and the tumor suppressor protein p53, and some specific proteins like the RNA Pol II, the cytoskeleton protein tau, and the G1/S protein Cyclin D1.

Synonyms:

PIN-1

Product images:

Western Blot: Cell lysates of 293T, HeLa and Jurkat (each 50ug) were resolved by SDS-PAGE, transferred to PVDF membrane and probed with anti-human Pin1 (1:500). Proteins were visualized using a goat anti-mouse secondary antibody conjugated to HRP and an ECL detection system.