

Product datasheet for **SM6033S**

KIR2DL1 Mouse Monoclonal Antibody [Clone ID: 2F9]

Product data:

Product Type:	Primary Antibodies
Clone Name:	2F9
Applications:	ELISA, IP, WB
Recommended Dilution:	ELISA. Immunoprecipitation. Western blot (1:500).
Reactivity:	Human
Host:	Mouse
Isotype:	IgG2a
Clonality:	Monoclonal
Immunogen:	Recombinant human KIR2DL1 (23-223 aa) purified from E. coli
Specificity:	This antibody recognizes human KIR2DL1. Other species not tested.
	<u>Cross reactivity:</u> KIR2DL1: +++ KIR2DL3: + KIR2DS4: + KIR2DL4: -
Formulation:	PBS, pH 7.4 containing 0.02% Sodium Azide and 10% Glycerol State: Purified State: Liquid purified Ig fraction
Concentration:	lot specific
Purification:	Protein-G affinity chromatography
Conjugation:	Unconjugated
Storage:	Store undiluted at 2-8°C for up to two weeks or (in aliquots) at -20°C for longer. Avoid repeated freezing and thawing.
Stability:	Shelf life: one year from despatch.
Gene Name:	killer cell immunoglobulin like receptor, two Ig domains and long cytoplasmic tail 1



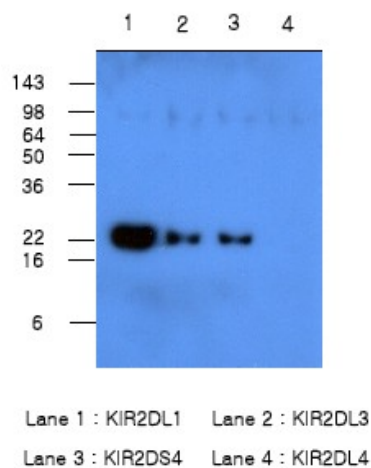
[View online »](#)

Database Link: [Entrez Gene 3802 Human P43626](#)

Background: The KIR family consists of transmembrane glycoproteins of the Ig superfamily expressed on human NK cells and a subset of human T cells which they are involved in recognition of either MHC class I molecules or unknown ligand on target cells and inhibit cytotoxic activities.

Synonyms: NKAT1

Product images:



Western blot analysis: Recombinant Human protein KIR2DL1, KIR2DL3, KIR2DS4 and KIR2DL4 (each 50 ng per well) were resolved by SDS-PAGE, transferred to PVDF membrane and probed with anti-Human KIR2DL1 antibody (1/500). Proteins were visualized using a Goat anti-Mouse secondary antibody conjugated to HRP and an ECL detection system.