

## Product datasheet for **SM6033**

### **KIR2DL1 Mouse Monoclonal Antibody [Clone ID: 2F9]**

#### **Product data:**

<b>Product Type:</b>	Primary Antibodies
<b>Clone Name:</b>	2F9
<b>Applications:</b>	ELISA, IP, WB
<b>Recommended Dilution:</b>	ELISA. Immunoprecipitation. Western blot (1:500).
<b>Reactivity:</b>	Human
<b>Host:</b>	Mouse
<b>Isotype:</b>	IgG2a
<b>Clonality:</b>	Monoclonal
<b>Immunogen:</b>	Recombinant human KIR2DL1 (23-223 aa) purified from E. coli
<b>Specificity:</b>	This antibody recognizes human KIR2DL1. Other species not tested.
	<u>Cross reactivity:</u> KIR2DL1: +++ KIR2DL3: + KIR2DS4: + KIR2DL4: -
<b>Formulation:</b>	PBS, pH 7.4 containing 0.02% Sodium Azide and 10% Glycerol State: Purified State: Liquid purified Ig fraction
<b>Concentration:</b>	lot specific
<b>Purification:</b>	Protein-G affinity chromatography
<b>Conjugation:</b>	Unconjugated
<b>Storage:</b>	Store undiluted at 2-8°C for up to two weeks or (in aliquots) at -20°C for longer. Avoid repeated freezing and thawing.
<b>Stability:</b>	Shelf life: one year from despatch.
<b>Gene Name:</b>	killer cell immunoglobulin like receptor, two Ig domains and long cytoplasmic tail 1



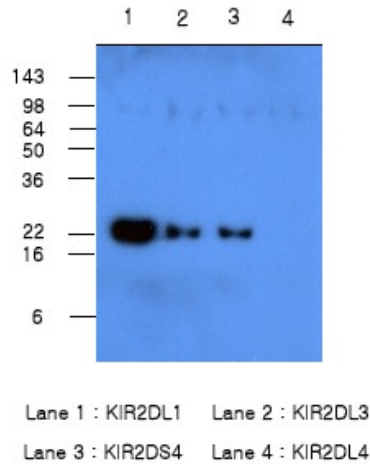
[View online »](#)

**Database Link:** [Entrez Gene 3802 Human P43626](#)

**Background:** The KIR family consists of transmembrane glycoproteins of the Ig superfamily expressed on human NK cells and a subset of human T cells which they are involved in recognition of either MHC class I molecules or unknown ligand on target cells and inhibit cytotoxic activities.

**Synonyms:** NKAT1

**Product images:**



Western blot analysis: Recombinant Human protein KIR2DL1, KIR2DL3, KIR2DS4 and KIR2DL4 (each 50 ng per well) were resolved by SDS-PAGE, transferred to PVDF membrane and probed with anti-Human KIR2DL1 antibody (1/500). Proteins were visualized using a Goat anti-Mouse secondary antibody conjugated to HRP and an ECL detection system.