

Product datasheet for **SM6031**

PARK7 Mouse Monoclonal Antibody [Clone ID: 1B11]

Product data:

Product Type:	Primary Antibodies
Clone Name:	1B11
Applications:	ELISA, WB
Recommended Dilution:	The antibody has been tested by ELISA and Western blot analysis to assure specificity and reactivity. <i>Recommended Dilution: 1/500~1/2,000 for Western blot (1/1,000 as starting dilution).</i>
Reactivity:	Human
Host:	Mouse
Isotype:	IgG1
Clonality:	Monoclonal
Immunogen:	Recombinant Human GST-DJ1 (1-189 aa) purified from <i>E. coli</i> .
Specificity:	This antibody detects Human Parkinson Disease Protein 7 (Park7/DJ-1). Other species not tested.
Formulation:	PBS, pH 7.4 containing 0.02% Sodium Azide and 10% Glycerol State: Purified State: Liquid purified Ig fraction
Concentration:	lot specific
Purification:	Affinity Chromatography on Protein G
Conjugation:	Unconjugated
Storage:	Store undiluted at 2-8°C for up to two weeks or (in aliquots) at -20°C for longer. Avoid repeated freezing and thawing.
Stability:	Shelf life: one year from despatch.
Gene Name:	Parkinsonism associated deglycase
Database Link:	Entrez Gene 11315 Human Q99497

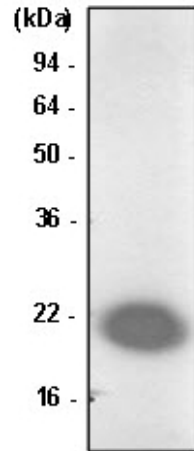


[View online »](#)

Background: Park7/DJ-1, which is a small 189 amino acid protein, is a ubiquitously expressed protein involved in various cellular processes including spermatogenesis and fertilization, cancer, RNA-binding, androgen-receptor signaling and oxidative stress. Mutations in the Park7/DJ-1 are the cause of autosomal recessive early-onset Parkinson's disease 7 (Park7).

Synonyms: Oncogene DJ1, Parkinson disease protein 7

Product images:



Western Blot analysis: Jurkat cell lysate was resolved by SDS-PAGE, transferred to PVDF membrane and probed with anti-Human Park7/DJ-1 Antibody (1/1000). Protein was visualized using a Goat anti-Mouse secondary antibody conjugated to HRP and aN ECL detection system.