

## Product datasheet for **SM6028**

### alpha Synuclein (SNCA) (61-95) Mouse Monoclonal Antibody [Clone ID: 5C2]

#### Product data:

Product Type:	Primary Antibodies
Clone Name:	5C2
Applications:	ELISA, IHC, WB
Recommended Dilution:	<b>ELISA.</b> <b>Western blot</b> (1/500-1/2,000). <b>Immunohistochemistry on Paraffin Sections</b> (10 µg/ml).
Reactivity:	Human
Host:	Mouse
Isotype:	IgG1
Clonality:	Monoclonal
Immunogen:	Recombinant Human Alpha-Synuclein (61-95) purified from <i>E. coli</i> .
Specificity:	This antibody has the specificity against the NAC domain of Alpha-Synuclein (61-95).
Formulation:	PBS, pH 7.4 containing 0.02% Sodium Azide and 10% Glycerol State: Purified State: Liquid purified Ig fraction
Concentration:	lot specific
Purification:	Affinity Chromatography on Protein G
Conjugation:	Unconjugated
Storage:	Store undiluted at 2-8°C for up to two weeks or (in aliquots) at -20°C for longer. Avoid repeated freezing and thawing.
Stability:	Shelf life: one year from despatch.
Gene Name:	synuclein alpha
Database Link:	<a href="#">Entrez Gene 6622 Human P37840</a>



[View online »](#)

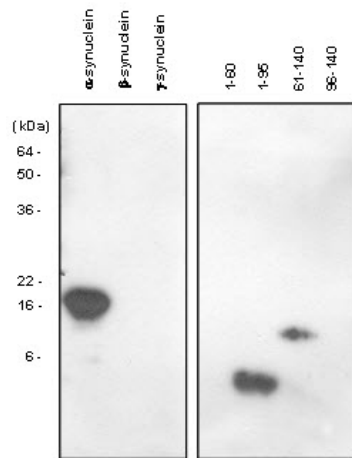
**Background:**

Alpha-Synuclein (amino acids 1-140), an acidic neuronal protein of 140 amino acids, is extremely heat-resistant and is natively unfolded with an extended structure primarily composed of random coils. Alpha-synuclein has been suggested to be implicated in the pathogenesis of Parkinson's disease and related neurodegenerative disorders, and more recently, to be an important regulatory component of vesicular transport in neuronal cells. Specially, the non-A beta component of amyloid plaques (NAC, amino acids 61-95) is a highly amyloidogenic peptide consisting of 35 amino acids which was first identified associated with senile plaques in the Alzheimer's disease brain.

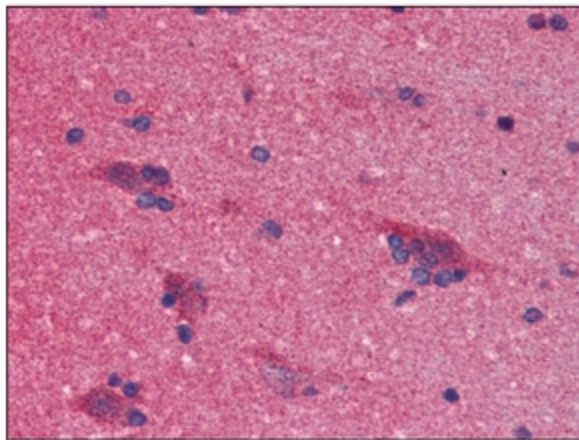
**Synonyms:**

NACP, PARK1

**Product images:**



Western blot analysis: The recombinant human synuclein family (α-, β-and γ-) and α-synuclein domains (1-60, 1-95, 61-140 and 96-140) proteins were resolved by SDS-PAGE, transferred to PVDF membrane and probed with anti-α-Synuclein (61-95 aa) antibody. (1:1,000). Proteins were visualized using a goat anti-mouse secondary antibody conjugated to HRP and an ECL detection system.



Staining of Formalin-Fixed, Paraffin-Embedded Human Brain using SNCA antibody. at 10 ug/ml followed by biotinylated anti-mouse IgG secondary antibody, Alkaline Phosphatase-Streptavidin and chromogen.