

Product datasheet for **SM6026S**

TLR7 (451-500) Mouse Monoclonal Antibody [Clone ID: 4F4]

Product data:

Product Type:	Primary Antibodies
Clone Name:	4F4
Applications:	ELISA, FC, IF, WB
Recommended Dilution:	ELISA. Immunocytochemistry / Immunofluorescence. Flow cytometry.
Reactivity:	Human
Host:	Mouse
Isotype:	IgG1
Clonality:	Monoclonal
Immunogen:	Recombinant human TLR7 (451-500 aa) purified from <i>E. coli</i>
Specificity:	The antibody recognizes TLR7 at aa 451-500.
Formulation:	PBS, pH 7.4 containing 0.02% Sodium Azide and 10% Glycerol State: Purified State: Liquid purified Ig fraction
Concentration:	lot specific
Purification:	Protein-G affinity chromatography
Conjugation:	Unconjugated
Storage:	Store undiluted at 2-8°C for up to two weeks or (in aliquots) at -20°C for longer. Avoid repeated freezing and thawing.
Stability:	Shelf life: one year from despatch.
Gene Name:	toll like receptor 7
Database Link:	Entrez Gene 51284 Human Q9NYK1



[View online »](#)

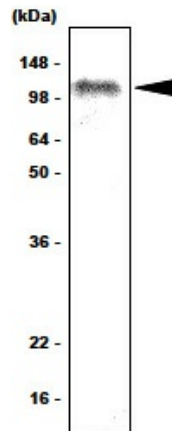
Background:

TLR7 is one of toll-like receptors which are type I transmembrane proteins involved in innate immunity by recognizing microbial conserved structures. These proteins are characterized by multiple copies of leucine rich repeats in the extracellular domain and IL-1 receptor motif in the cytoplasmic domain, and act through adaptor molecules such as MyD88 and TIRAP to activate various kinases and transcription factors.

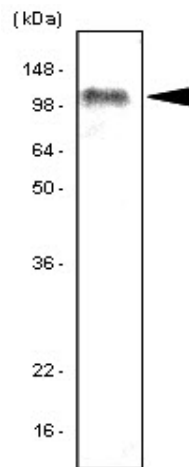
Human TLR7(hTLR7) is predominantly expressed in lung, placenta and spleen and hTLR7,8 genes are located on the sex chromosome X. hTLR7 may play an important role in detecting and combating viral infections.

Synonyms:

Toll-like receptor 7

Product images:


The Ramos cell lysates (80ug) were resolved by SDS-PAGE, transferred to PVDF membrane and probed with anti-human TLR7 antibody (1:1000). Proteins were visualized using a goat anti-mouse secondary antibody conjugated to HRP and an ECL detection system. Arrow indicates TLR7 protein in human Ramos cells.



Western blot analysis: The Ramos cell lysates (80 ug) were resolved by SDS-PAGE, transferred to PVDF membrane and probed with anti-human TLR7 antibody (1:1000). Proteins were visualized using a goat anti-mouse secondary antibody conjugated to HRP and an ECL detection system. Arrow indicates TLR7 protein in human Ramos cells.