

Product datasheet for **SM6023S**

KIR2DS4 Mouse Monoclonal Antibody [Clone ID: 5F2]

Product data:

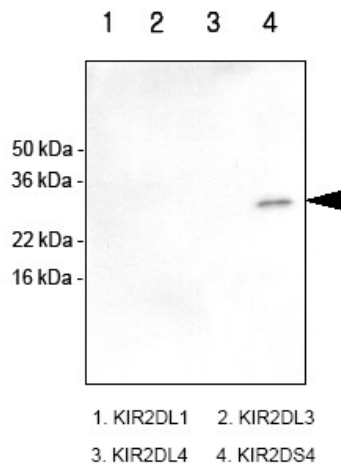
Product Type:	Primary Antibodies
Clone Name:	5F2
Applications:	ELISA, WB
Recommended Dilution:	ELISA. Western blot (1:500 - 1:2,000, recommended starting dilution 1:1,000).
Reactivity:	Human
Host:	Mouse
Isotype:	IgG2b
Clonality:	Monoclonal
Immunogen:	Recombinant human KIR2DS4 (23-223 aa) purified from <i>E. coli</i>
Specificity:	This antibody detects KIR2DS4.
Formulation:	PBS, pH 7.4 containing 0.02% Sodium Azide and 10% Glycerol State: Purified State: Liquid Ig fraction
Concentration:	lot specific
Purification:	Protein-G affinity chromatography
Conjugation:	Unconjugated
Storage:	Store undiluted at 2-8°C for up to two weeks or (in aliquots) at -20°C for longer. Avoid repeated freezing and thawing.
Stability:	Shelf life: one year from despatch.
Gene Name:	killer cell immunoglobulin like receptor, two Ig domains and short cytoplasmic tail 4
Database Link:	Entrez Gene 3809 Human P43632
Background:	The KIR family consists of transmembrane glycoproteins of the Ig superfamily expressed on human NK cells and a subset of human T cells which they are involved in recognition of either MHC class I molecules or unknown ligand on target cells and inhibit cytotoxic activities. KIR2DS4 is an activating receptor of KIR family.



[View online »](#)

Synonyms: KKA3, NKAT8, CL-39, CL-17

Product images:



Western blot analysis Recombinant Human KIR2DL1, KIR2DL3, KIR2DL4 and KIR2DS4 (each 100 ng) were resolved by SDS-PAGE, transferred to PVDF membrane and probed with anti-Human KIR2DS4 antibody (1/1000). Proteins were visualized using a Goat anti-Mouse secondary antibody conjugated to HRP and an ECL detection system. Arrow indicates recombinant Human KIR2DS4 protein.