

## Product datasheet for **SM6021**

### **KIR2DL4 (L1, L3, L4, S4) Mouse Monoclonal Antibody [Clone ID: 2H6]**

#### Product data:

Product Type:	Primary Antibodies
Clone Name:	2H6
Applications:	ELISA, WB
Recommended Dilution:	<b>ELISA.</b> <b>Western blot</b> (1/500-1/1,000).
Reactivity:	Human
Host:	Mouse
Isotype:	IgG2b
Clonality:	Monoclonal
Immunogen:	Recombinant Human KIR2DL4 (44-202a) purified from <i>E. coli</i>
Specificity:	This antibody recognizes KIR2DL1, KIR2DL3, KIR2DL4 and KIR2DS4, members of killer cell immunoglobulin-like receptor family: <b>ELISA:</b> KIR2DL1: ++ KIR2DL3: + KIR2DL4: +++ KIR2DS4: ++ <b>Western blot</b> (1/500-1/2,000): KIR2DL1: +++ KIR2DL3: +++ KIR2DL4: ++ KIR2DS4: ++
Formulation:	PBS, pH 7.4 containing 0.02% Sodium Azide and 10% Glycerol State: Purified State: Liquid purified Ig fraction
Concentration:	lot specific
Purification:	Affinity Chromatography on Protein G
Conjugation:	Unconjugated



[View online »](#)

**Storage:** Store undiluted at 2-8°C for up to two weeks or (in aliquots) at -20°C for longer. Avoid repeated freezing and thawing.

**Stability:** Shelf life: one year from despatch.

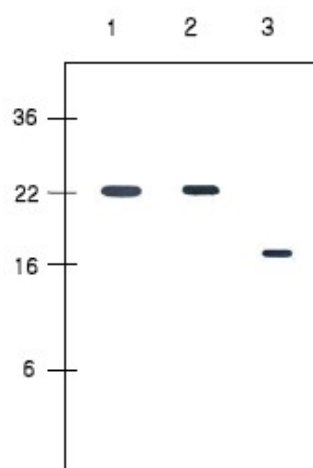
**Gene Name:** killer cell immunoglobulin like receptor, two Ig domains and long cytoplasmic tail 4

**Database Link:** [Entrez Gene 3805 Human Q99706](#)

**Background:** The KIR family consists of transmembrane glycoproteins of the Ig superfamily expressed on human NK cells and a subset of human T cells which they are involved in recognition of either MHC class I molecules or unknown ligand on target cells and inhibit cytotoxic activities.

**Synonyms:** KIR103AS, G9P

### Product images:



Western blot analysis : Human recombinant protein KIR2DL1, KIR2DL3 and KIR2DL4 (each 20 ng per well) were resolved by SDS-PAGE, transferred to PVDF membrane and probed with anti-Human KIR2DL4 antibody (1/500). Proteins were visualized using a goat anti-mouse secondary antibody conjugated to HRP and a ECL detection system. Lane 1 : Extracellular domain of KIR2DL1 (23-223aa) Lane 2 : Extracellular domain of KIR2DL3 (23-223aa) Lane 3 : Extracellular domain of KIR2DL4 (44-202aa)