

## Product datasheet for **SM6017**

### **RASSF1 (Isoform A) Mouse Monoclonal Antibody [Clone ID: 3F3]**

#### **Product data:**

Product Type:	Primary Antibodies
Clone Name:	3F3
Applications:	ELISA, FC, IF, WB
Recommended Dilution:	The antibody has been tested by - <b>Immunocytochemistry analysis</b> (~ 1/100) - <b>Flow Cytometry</b> (2-5 µg for 1x10 <sup>6</sup> cells) - <b>Western blotting</b> (1/500~1/2,000) - <b>ELISA</b> to assure specificity and reactivity.
Reactivity:	Human
Host:	Mouse
Isotype:	IgG1
Clonality:	Monoclonal
Immunogen:	Recombinant Human RASSF1A (1-340 aa), purified from <i>E. coli</i> .
Specificity:	The antibody recognizes Human RASSF1A. Other species not tested.
Formulation:	PBS, pH 7.4 containing 0.02% Sodium Azide and 10% Glycerol State: Purified State: Liquid purified Ig fraction
Concentration:	lot specific
Purification:	Affinity Chromatography on Protein G
Conjugation:	Unconjugated
Storage:	Store undiluted at 2-8°C for up to two weeks or (in aliquots) at -20°C for longer. Avoid repeated freezing and thawing.
Stability:	Shelf life: one year from despatch.
Gene Name:	Ras association domain family member 1
Database Link:	<a href="#">Entrez Gene 11186 Human Q9NS23</a>



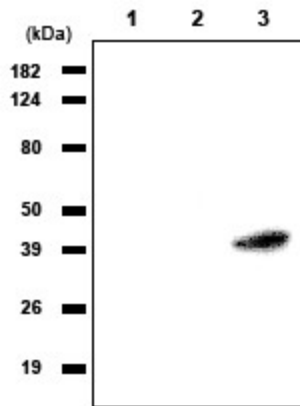
[View online »](#)

**Background:**

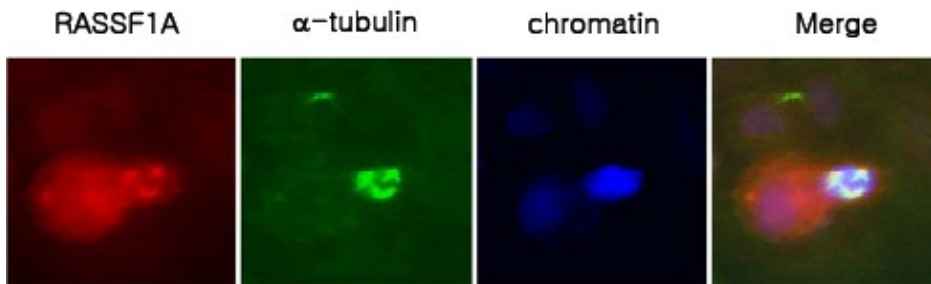
The tumor suppressor gene RASSF1A (3p21.3), human Ras association domain family 1A, is expressed in heart, brain, placenta, lung, liver, skeletal muscle, kidney, pancreas, spleen, thymus, prostate, testis, small intestine, colon, and peripheral blood leukocytes. RASSF1A expression is inhibited by hypermethylation of the CpG island including the promoter and early transcribed regions of the human RASSF1A gene. Hypermethylated RASSF1A promoter is observed in primary tumors. Furthermore, RASSF1A is related with cell cycle regulation, apoptosis and microtubule stability.

**Synonyms:**

RASSF1A, RDA32, REH3P21, NORE2A

**Product images:**


Western blot analysis: The extracts of HEK293 (1), A549 (2) and HeLa (3) cells were resolved by SDS-PAGE, transferred to PVDF membrane and probed with anti-Human RASSF1A antibody (1/1000). Proteins were visualized using a goat anti-mouse secondary antibody conjugated to HRP and a ECL detection system.



Immunocytochemistry: A431 cells were labeled with anti-RASSF1a antibody (clone 3F3) and detection was using a biotinylated secondary antibody and Texas-red conjugated Streptavidin.