

Product datasheet for **SM6015S**

BMP7 Mouse Monoclonal Antibody [Clone ID: 4E7]

Product data:

Product Type:	Primary Antibodies
Clone Name:	4E7
Applications:	ELISA, WB
Recommended Dilution:	ELISA. Western blot (1/500 - 1/1,000).
Reactivity:	Human, Mouse, Rat
Host:	Mouse
Isotype:	IgG1
Clonality:	Monoclonal
Immunogen:	Recombinant human BMP7 (293-431 aa) purified from E. coli
Specificity:	This antibody reacts with BMP-7.
Formulation:	PBS, pH 7.4 containing 0.02% Sodium Azide and 10% Glycerol State: Purified State: Liquid purified Ig fraction
Concentration:	lot specific
Purification:	Protein-G affinity chromatography
Conjugation:	Unconjugated
Storage:	Store undiluted at 2-8°C for up to two weeks or (in aliquots) at -20°C for longer. Avoid repeated freezing and thawing.
Stability:	Shelf life: one year from despatch.
Gene Name:	bone morphogenetic protein 7
Database Link:	Entrez Gene 655 Human P18075



[View online »](#)

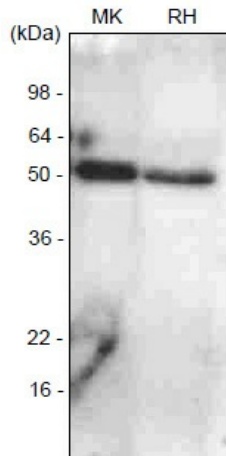
Background:

BMP-7 (bone morphogenetic protein-7), also known as OP-1 (osteogenic protein-1), is a member of the transforming growth factor β (TGF β) superfamily. BMP-7 plays an essential role during ontogeny of the mammalian eye and kidney, also, is expressed in heart, lung, small intestine, limb bud and teeth.

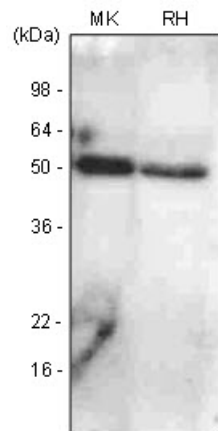
In addition, noggin, one of the soluble BMP antagonists, regulated the action of BMPs on mesenchymal precursor cells, partially through a feedback type of inhibition.

Synonyms:

BMP-7, Bone morphogenetic protein 7, OP1, Osteogenic protein 1

Product images:

The extracts of mouse kidney (Mk) and rat heart (RH) were resolved by SDS-PAGE, transferred to PVDF membrane and probed with anti-human BMP7 antibody (1:1,000). Protein was visualized using a goat anti-mouse secondary antibody conjugated to HRP and an ECL detection system.



Western blot analysis: The extracts of mouse kidney (MK) and rat heart (RH) were resolved by SDS-PAGE, transferred to PVDF membrane and probed with anti-human BMP7 antibody (1:1,000). Protein was visualized using a goat anti-mouse secondary antibody conjugated to HRP and an ECL detection system.