

## Product datasheet for **SM6013**

### MIF Mouse Monoclonal Antibody [Clone ID: 4E4]

#### Product data:

Product Type:	Primary Antibodies
Clone Name:	4E4
Applications:	ELISA, FC, IF, IHC, WB
Recommended Dilution:	<b>ELISA.</b> <b>Western blot:</b> 1/500-1/2,000. Recommended starting dilution is 1/1,000. <b>Flow Cytometry.</b> <b>Immunofluorescence/Immunocytochemistry.</b> <b>Immunohistochemistry on Paraffin Sections:</b> 5 µg/ml.
Reactivity:	Human
Host:	Mouse
Isotype:	IgG1
Clonality:	Monoclonal
Immunogen:	Recombinant Human MIF (1-115 aa) purified from <i>E. coli</i> .
Specificity:	The antibody recognizes Human MIF. Other species not tested.
Formulation:	PBS, pH 7.4 containing 0.02% Sodium Azide and 10% Glycerol State: Purified State: Liquid purified Ig fraction
Concentration:	lot specific
Purification:	Affinity Chromatography on Protein G
Conjugation:	Unconjugated
Storage:	Store undiluted at 2-8°C for up to two weeks or (in aliquots) at -20°C for longer. Avoid repeated freezing and thawing.
Stability:	Shelf life: one year from despatch.
Gene Name:	macrophage migration inhibitory factor (glycosylation-inhibiting factor)
Database Link:	<a href="#">Entrez Gene 4282 Human P14174</a>



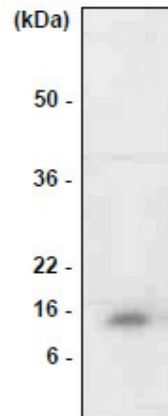
[View online »](#)

**Background:**

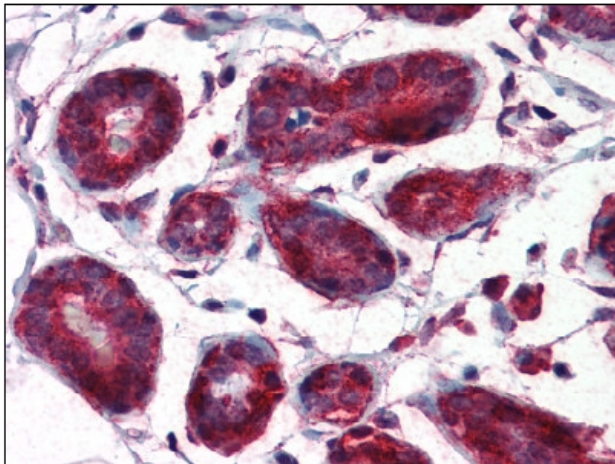
The cytokine Macrophage migration inhibitory factor (MIF) has been identified to be secreted by the pituitary gland and the monocyte/macrophage and to play an important role in endotoxic shock. MIF has the unique property of being released from macrophages and T-cells in response to physiological concentrations of glucocorticoids. The secretion of MIF is tightly regulated and decreases at high, anti-inflammatory steroid concentration.

**Synonyms:**

Macrophage migration inhibitory factor, Phenylpyruvate tautomerase, Glycosylation-inhibiting factor, GLIF, MMIF

**Product images:**

Western blot analysis: The extract of HL-60 was resolved by SDS-PAGE, transferred to PVDF membrane and probed with anti-Human MIF antibody (1/1,000). Protein was visualized using a goat anti-mouse secondary antibody conjugated to HRP and an ECL detection system.



MIF antibody staining of Formalin-Fixed, Paraffin-Embedded Human Breast.