

Product datasheet for **SM6012S**

HTRA2 Mouse Monoclonal Antibody [Clone ID: 1B3]

Product data:

Product Type:	Primary Antibodies
Clone Name:	1B3
Applications:	ELISA, WB
Recommended Dilution:	ELISA. Western blot (1:500 - 1:2,000).
Reactivity:	Human, Mouse
Host:	Mouse
Isotype:	IgG1
Clonality:	Monoclonal
Immunogen:	Recombinant human HtrA2/Omi (134-458 aa) purified from E. coli
Specificity:	The antibody recognizes human and mouse HtrA2/Omi. Does not react with rat. Other species not tested.
Formulation:	PBS, pH 7.4 containing 0.02% Sodium Azide and 10% Glycerol State: Purified State: Liquid purified Ig fraction
Concentration:	lot specific
Purification:	Protein-G affinity chromatography
Conjugation:	Unconjugated
Storage:	Store undiluted at 2-8°C for up to two weeks or (in aliquots) at -20°C for longer. Avoid repeated freezing and thawing.
Stability:	Shelf life: one year from despatch.
Gene Name:	HtrA serine peptidase 2
Database Link:	Entrez Gene 27429 Human O43464



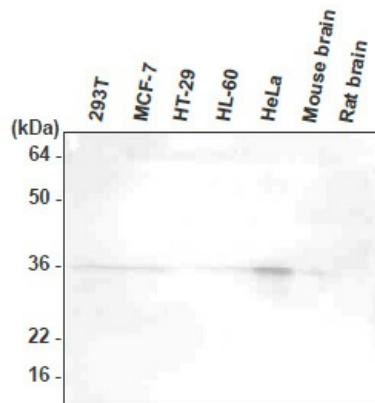
[View online »](#)

Background:

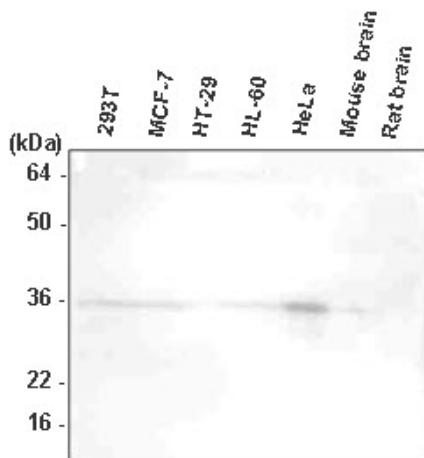
HtrA2/Omi is a mammalian serine protease at high temperatures and a chaperone at low temperature. The full-length HtrA2 is synthesized as a precursor protein and then targeted to the mitochondria where it is matured by the removal of N-terminal 133 residues. Recently, HtrA2 has been known to contribute both to caspase-dependent and caspase-independent cell death.

Synonyms:

OMI, Serine protease 25

Product images:


The extracts of 293T, MCF7, HT-29, HL-60, HeLa, mouse brain, and rat brain were resolved by SDS-PAGE, transferred to PVDF membrane and probed with anti-human HtrA2/Omi antibody (1:1,000). Proteins were visualized using a goat anti-mouse secondary antibody conjugated to HRP and an ECL detection system.



Western blot analysis: The extracts of 293T, MCF7, HT-29, HL-60, HeLa, mouse brain, and rat brain were resolved by SDS-PAGE, transferred to PVDF membrane and probed with anti-human HtrA2/Omi antibody (1:1,000). Proteins were visualized using a goat anti-mouse secondary antibody conjugated to HRP and an ECL detection system.