

Product datasheet for **SM6011S**

Alpha B Crystallin (CRYAB) Mouse Monoclonal Antibody [Clone ID: 2E8]

Product data:

Product Type:	Primary Antibodies
Clone Name:	2E8
Applications:	ELISA, FC, WB
Recommended Dilution:	ELISA. Western blot: 1/500-1/2000, recommended starting dilution is 1/1000. Flow Cytometry.
Reactivity:	Human, Mouse
Host:	Mouse
Isotype:	IgG2b
Clonality:	Monoclonal
Immunogen:	Recombinant human α -Crystallin B (1-175 aa) purified from E. coli
Specificity:	The antibody recognizes Human and Mouse Alpha-Crystallin B. Other species not tested.
Formulation:	PBS, pH 7.4 containing 0.02% Sodium Azide and 10% Glycerol State: Purified State: Liquid purified Ig fraction
Concentration:	lot specific
Purification:	Affinity Chromatography on Protein G
Conjugation:	Unconjugated
Storage:	Store undiluted at 2-8°C for up to two weeks or (in aliquots) at -20°C for longer. Avoid repeated freezing and thawing.
Stability:	Shelf life: one year from despatch.
Gene Name:	crystallin alpha B
Database Link:	Entrez Gene 1410 Human P02511



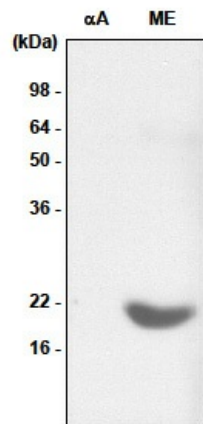
[View online »](#)

Background:

α -Crystallins are composed of two gene products; α -Crystallin A and B, for acidic and basic, respectively. α -Crystallins can be induced by heat shock and are members of the small heat shock protein (sHSP also known as the HSP20). They act as molecular chaperones and hold them in large soluble aggregates. These heterogeneous aggregates consist of 30-40 subunits; the α -Crystallin A and B subunits have a 3:1 ratio, respectively. Two additional functions of α -crystallins are an autokinase activity and participation in the intracellular architecture. α -Crystallin B is expressed widely in many tissues and organs and occurs in many neurological diseases.

Synonyms:

Alpha(B)-crystallin, CRYAB, Heat shock protein beta-5, Renal carcinoma antigen NY-REN-27, HspB5

Product images:

Western blot analysis: Recombinant α -crystallin A (aA) and the extract of mouse eye (ME) were resolved by SDS-PAGE, transferred to PVDF membrane and probed with anti-human α -crystallin B antibody (1:1,000). Proteins were visualized using a goat anti-mouse secondary antibody conjugated to HRP and an ECL detection system.