

## Product datasheet for **SM600F**

### CD4 Mouse Monoclonal Antibody [Clone ID: KEN-4]

#### Product data:

Product Type:	Primary Antibodies
Clone Name:	KEN-4
Applications:	FC
Recommended Dilution:	<b>Flow Cytometry:</b> Use 10 µl of neat antibody to label 1x10 <sup>6</sup> cells in 100 µl.
Reactivity:	Rabbit
Host:	Mouse
Isotype:	IgG2a
Clonality:	Monoclonal
Immunogen:	Rabbit thymocytes. Spleen cells from immunised mice were fused with cells of the mouse PA1 myeloma cell line.
Specificity:	This antibody recognises the CD4 cell surface antigen, a 50kD glycoprotein expressed by helper T lymphocytes.
Formulation:	PBS, pH 7.4 Label: FITC State: Liquid purified Ig fraction Stabilizer: 1% BSA Preservative: 0.09% Sodium Azide Label: Fluorescein Isothiocyanate Isomer 1
Concentration:	lot specific
Purification:	Affinity Chromatography on Protein G
Conjugation:	FITC
Storage:	Store the antibody undiluted at 2-8°C for one month or (in aliquots) at -20°C for longer. This product is photosensitive and should be protected from light. Avoid repeated freezing and thawing.
Stability:	Shelf life: one year from despatch.
Database Link:	<a href="#">Entrez Gene 100009152 Rabbit P46630</a>



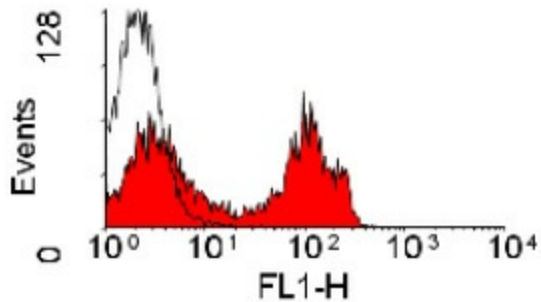
[View online »](#)

**Background:**

CD4 is a single chain transmembrane glycoprotein (59 kDa) which belongs to the immunoglobulin superfamily. CD4 is present on a subset of T lymphocytes ("helper/inducer" T cells) and is also expressed at a lower level on monocytes, tissue macrophages and granulocytes. The antigen is involved in binding to MHC class II molecules. The intracellular domain of the antigen is associated with p56lck protein tyrosine kinase.

**Synonyms:**

T-cell surface antigen T4/Leu-3

**Product images:**

Staining of rabbit peripheral blood lymphocytes with MOUSE ANTI RABBIT CD4: FITC.