

Product datasheet for **SM6009**

CEBP Beta (CEBPB) Mouse Monoclonal Antibody [Clone ID: 47A1]

Product data:

Product Type:	Primary Antibodies
Clone Name:	47A1
Applications:	ELISA, IF, IHC, WB
Recommended Dilution:	ELISA. Western blot (1/500-1/2,000) Recommended Starting Dilution: 1/1,000. Immunofluorescence. Immunohistochemistry on Paraffin Sections (10 µg/ml).
Reactivity:	Human, Mouse
Host:	Mouse
Isotype:	IgG1
Clonality:	Monoclonal
Immunogen:	Recombinant Human C/EBP-beta (1-271 aa) purified from <i>E. coli</i> .
Specificity:	The antibody recognizes Human and Mouse C/EBP-beta. Other species not tested.
Formulation:	PBS, pH 7.4 containing 0.02% Sodium Azide and 10% Glycerol State: Purified State: Liquid purified Ig fraction
Concentration:	lot specific
Purification:	Affinity Chromatography on Protein G
Conjugation:	Unconjugated
Storage:	Store undiluted at 2-8°C for up to two weeks or (in aliquots) at -20°C for longer. Avoid repeated freezing and thawing.
Stability:	Shelf life: one year from despatch.
Gene Name:	CCAAT/enhancer binding protein beta
Database Link:	Entrez Gene 1051 Human P17676



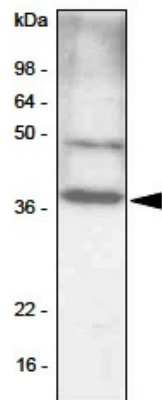
[View online »](#)

Background:

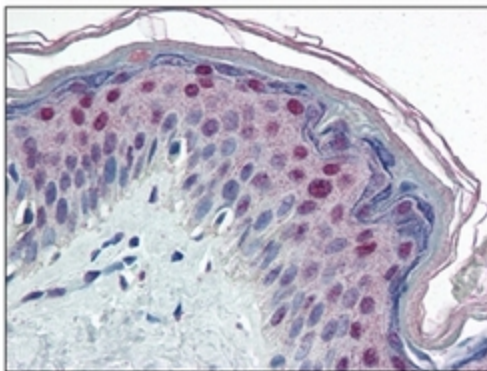
CCAAT/enhancer-binding proteins (C/EBPs) are a family of basic leucine zipper (bZIP) DNA binding proteins that play important roles in normal cellular differentiation and function in a variety of tissues. The C/EBP family is critical for innate immunity and inflammatory response, and consists of five core members: C/EBP α , C/EBP β , C/EBP δ , C/EBP ϵ , and C/EBP γ . Among these proteins, C/EBP β is usually highly expressed in liver, intestine, lung and adipose. C/EBP β has three isoforms, two activator, (LAP* and LAP) and a repressor (LIP). These isoforms are differentially translated from the same mRNA. The expression of these isoforms is developmentally and hormonally regulated.

Synonyms:

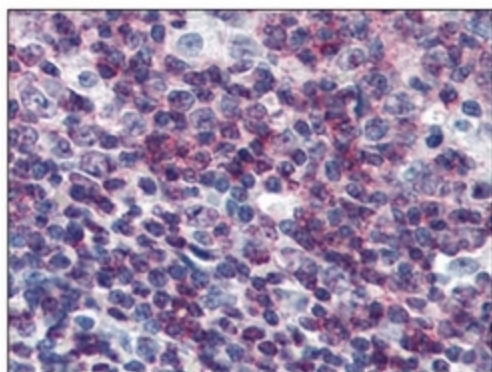
C/EBP beta, TCF5, LAP, NF-IL6

Product images:

Western blot analysis: NIH 3T3 cell lysates (30 ug) were resolved by SDS-PAGE, transferred to PVDF membrane and probed with CEBPB antibody (1/1,000). Protein was visualized using a Goat anti-Mouse secondary antibody conjugated to HRP and an ECL detection system.



Immunohistochemistry: CEBPB antibody staining of Formalin-Fixed, Paraffin-Embedded Human Skin at 10 ug/ml followed by biotinylated anti-Mouse IgG secondary antibody, Alkaline Phosphatase-Streptavidin and chromogen.



Immunohistochemistry: CEBPB antibody staining of Formalin-Fixed, Paraffin-Embedded Human Tonsil at 10 ug/ml followed by biotinylated anti-Mouse IgG secondary antibody, Alkaline Phosphatase-Streptavidin and chromogen.