

Product datasheet for **SM6007S**

LYVE1 (25-235) Mouse Monoclonal Antibody [Clone ID: 4G1]

Product data:

Product Type:	Primary Antibodies
Clone Name:	4G1
Applications:	ELISA, FC, WB
Recommended Dilution:	ELISA. Western blot (1/500-1/1,000). Flow cytometry.
Reactivity:	Human
Host:	Mouse
Isotype:	IgG2b
Clonality:	Monoclonal
Immunogen:	Recombinant human LYVE-1 (25-235 aa) purified from <i>E. coli</i>
Specificity:	This antibody recognises Lyve-1 at aa 25-235.
Formulation:	PBS, pH 7.4 containing 0.02% Sodium Azide and 10% Glycerol State: Purified State: Liquid purified Ig fraction
Concentration:	lot specific
Purification:	Protein-G affinity chromatography
Conjugation:	Unconjugated
Storage:	Store undiluted at 2-8°C for up to two weeks or (in aliquots) at -20°C for longer. Avoid repeated freezing and thawing.
Stability:	Shelf life: one year from despatch.
Gene Name:	lymphatic vessel endothelial hyaluronan receptor 1
Database Link:	Entrez Gene 10894 Human Q9Y5Y7



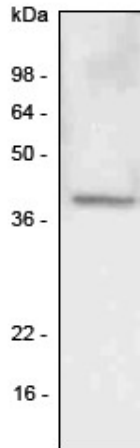
[View online »](#)

Background:

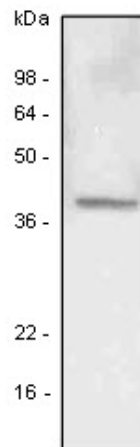
Lymphatic vascular endothelial hyaluronan receptor-1 (LYVE-1), a selective marker of the lymphatic endothelium, is a surface endocytic receptor for hyaluronan (HA), which is an extracellular glycosaminoglycan involved in cell adhesion and migration. HA is widely expressed on leukocytes, dendritic cells, and tumor cell, and is identified by searching expressed sequence tag (EST) databases for sequences homologous (41%) with the metastasis related CD44 molecules.

Synonyms:

LYVE1, CRSBP-1, CRSBP1, HAR, XLKD1

Product images:

Western blot analysis: A549 (lung carcinoma) cell lysate was resolved by SDS-PAGE, transferred to PVDF membrane and probed with anti-human LYVE-1 antibody (1/500). Proteins were visualized using a goat anti-mouse secondary antibody conjugated to HRP and an ECL detection system.



A549 (lung carcinoma) cell lysate was resolved by SDS-PAGE, transferred to PVDF membrane and probed with anti-human LYVE-1 antibody (1:500). Proteins were visualized using a goat anti-mouse secondary antibody conjugated to HRP and an ECL detection system.