

## Product datasheet for **SM6005S**

### PPM1A Mouse Monoclonal Antibody [Clone ID: P6C7]

#### Product data:

Product Type:	Primary Antibodies
Clone Name:	P6C7
Applications:	ELISA, IF, IHC, WB
Recommended Dilution:	<b>ELISA.</b> <b>Western blot:</b> 1/250~1/1000 (1/250 as starting dilution). <b>Immunofluorescence/Immunocytochemistry.</b> <b>Immunohistochemistry on Paraffin Sections:</b> 15 µg/ml.
Reactivity:	Human, Mouse
Host:	Mouse
Isotype:	IgG2b
Clonality:	Monoclonal
Immunogen:	Recombinant Human PP2C-alpha protein
Specificity:	This antibody detects Protein Phosphatase 2C alpha (PP2C alpha).
Formulation:	PBS, pH 7.4 containing 0.02% Sodium Azide and 10% Glycerol State: Purified State: Liquid purified Ig fraction.
Concentration:	lot specific
Purification:	Protein-G affinity chromatography
Conjugation:	Unconjugated
Storage:	Store undiluted at 2-8°C for up to two weeks or (in aliquots) at -20°C for longer. Avoid repeated freezing and thawing.
Stability:	Shelf life: one year from despatch.
Gene Name:	protein phosphatase, Mg <sup>2+</sup> /Mn <sup>2+</sup> dependent 1A
Database Link:	<a href="#">Entrez Gene 5494 Human P35813</a>



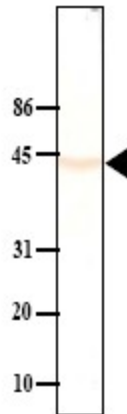
[View online »](#)

**Background:**

Protein phosphatase 2C(PP2C $\alpha$ ) is a Mn<sup>2+</sup>- or Mg<sup>2+</sup>-dependent protein serine/threonine phosphatase that inhibits the human stress-responsive p38 and JNK MAPK pathways and regulates cellular stress response in eukaryotes. The PPM (metal-dependent protein phosphatase) family of Ser/Thr protein phosphatases have recently been shown to down-regulate the stress response pathways in eukaryotes. Within the stress pathway, key signaling kinases, which are activated by protein phosphorylation, have been proposed as the in vivo substrates of PP2C, the prototypical member of the PPM family.

**Synonyms:**

PPPM1A, Protein phosphatase 2C isoform alpha, PP2C-alpha, Protein phosphatase IA

**Product images:**

Immunoblot analysis Mouse liver cytosol extract was resolved by electrophoresis, transferred to PVDF membrane and probed with anti-PP2C-alpha (1/250). Proteins were visualized using a goat anti-mouse secondary antibody conjugated to HRP and a DAP detection system. Arrow indicates PP2C-alpha (~43kDa)