

## Product datasheet for **SM6002**

### TPD52L2 Mouse Monoclonal Antibody [Clone ID: d1C5]

#### Product data:

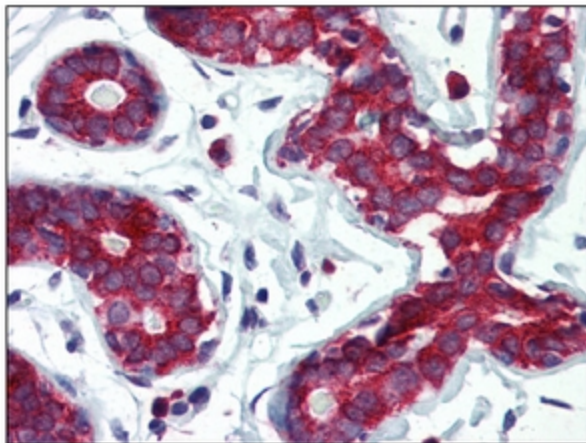
Product Type:	Primary Antibodies
Clone Name:	d1C5
Applications:	ELISA, FC, IHC, WB
Recommended Dilution:	<b>ELISA.</b> <b>Western blot:</b> 1/500-1/2000. <b>Flow Cytometry.</b> <b>Immunohistochemistry on Paraffin Sections:</b> 5 µg/ml.
Reactivity:	Human
Host:	Mouse
Isotype:	IgG2b
Clonality:	Monoclonal
Immunogen:	Recombinant GST-TPD52L1 protein.
Specificity:	This antibody detects D52L2.
Formulation:	PBS, pH 7.4 containing 0.02% Sodium Azide and 10% Glycerol State: Purified State: Liquid purified Ig fraction.
Purification:	Protein-G affinity chromatography
Conjugation:	Unconjugated
Storage:	Store undiluted at 2-8°C for up to two weeks or (in aliquots) at -20°C for longer. Avoid repeated freezing and thawing.
Stability:	Shelf life: one year from despatch.
Gene Name:	tumor protein D52 like 2
Database Link:	<a href="#">Entrez Gene 7165 Human O43399</a>
Background:	D52-like Protein(D52L2, also called TPD52L2) is a member of D52 gene family and overexpressed in human breastcarcinoma. This protein contains coiled-coil motif, which is responsible for homo- and heteromeric interaction, and may be a regulator of cell proliferation and calcium-mediated signal transduction.



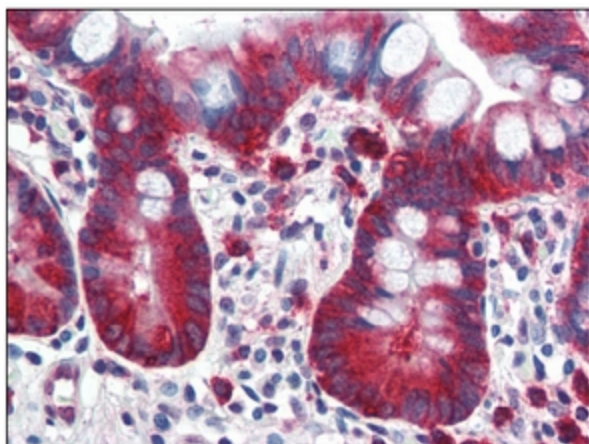
[View online »](#)

Synonyms: Tumor protein D52-like 2

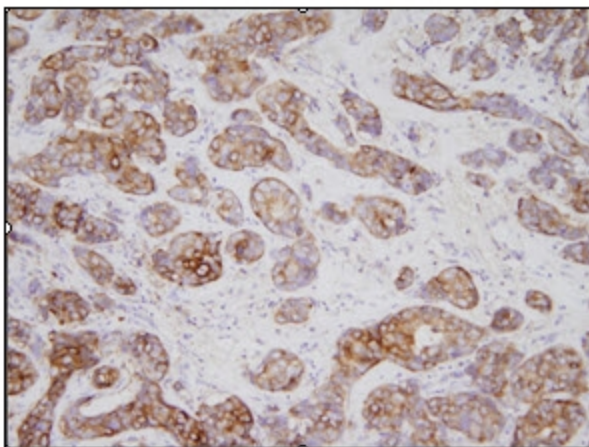
**Product images:**



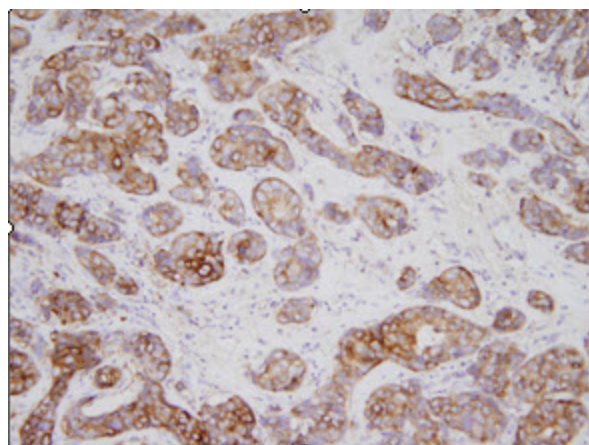
SM6002 TPD52L1 antibody staining of Formalin-Fixed, Paraffin-Embedded Human Breast at 5 ug/ml followed by biotinylated anti-mouse IgG secondary antibody, alkaline phosphatase-streptavidin and chromogen.



SM6002 TPD52L1 antibody staining of Formalin-Fixed, Paraffin-Embedded Human Small Intestine at 5 ug/ml followed by biotinylated anti-mouse IgG secondary antibody, alkaline phosphatase-streptavidin and chromogen.



SM6002 TPD52L1 antibody staining of Formalin-Fixed, Paraffin-Embedded Human Breast Carcinoma Tissues at 1/200. Slides were then washed in PBS, and were incubated in avidin biotin anti-rabbit labeled polymer for 30 min at RT.



Human gastric cancer tissues were incubated with anti-human TPD52L1 (1:200) for o/n at room temperature. Slides were then washed in PBS, and were incubated in avidin biosystem anti-rabbit labeled polymer for 30 min at RT. Enzyme detection was performed with DAB chromogen.