

## Product datasheet for **SM600S**

### **KIR2DL3 Mouse Monoclonal Antibody [Clone ID: 190IIC311]**

#### **Product data:**

Product Type:	Primary Antibodies
Clone Name:	190IIC311
Applications:	ELISA, FC, WB
Recommended Dilution:	<b>Flow Cytometry</b> (5-10g/1x10e6). <b>ELISA</b> (1/1,000 when tested against the immunizing protein). <b>Western blot</b> (1 µg/ml). The antibody has been tested by ELISA, Western blot and immunofluorescent staining with Flow Cytometric analysis to assure specificity. This product is routinely tested on peripheral blood mononuclear cells (PBMCs) or natural Killer(NK) cells. The histogram is an example of the expected reactivity.
Reactivity:	Human
Host:	Mouse
Isotype:	IgG2a
Clonality:	Monoclonal
Immunogen:	Recombinant Human KIR2DL3 (19-161aa) purified from E. coli
Specificity:	Reacts with extracellular domain of the KIR2DL3. Shows no reactivity with KIR2DL1 and KIR2DS4 in Western blot and ELISA.
Formulation:	PBS, pH 7.4 containing 0.02% Sodium Azide and 10% Glycerol State: Purified State: Liquid purified Ig fraction
Concentration:	lot specific
Purification:	Affinity Chromatography on Protein G
Conjugation:	Unconjugated
Storage:	Store undiluted at 2-8°C for up to two weeks or (in aliquots) at -20°C for longer. Avoid repeated freezing and thawing.
Stability:	Shelf life: one year from despatch.
Gene Name:	killer cell immunoglobulin like receptor, two Ig domains and long cytoplasmic tail 3



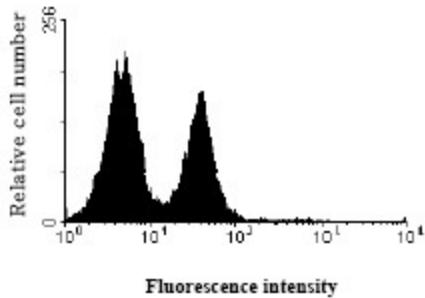
[View online »](#)

Database Link: [Entrez Gene 3804 Human P43628](#)

**Background:** KIR2DL3 is a member of the killer cell immunoglobulin-like receptor(KIR) family. The KIR family consists of transmembrane glycoproteins of the Ig superfamily expressed on human NK cells and a subset of human T cells which they are involved in recognition of either MHC class I molecules or unknown ligand on target cells and inhibit cytotoxic activities.

**Synonyms:** KIRCL23

**Product images:**



Profile of NK cells analyzed by Flow Cytometry