

Product datasheet for **SM568P**

Tubulin (TUBA1B) Rat Monoclonal Antibody [Clone ID: YOL1/34]

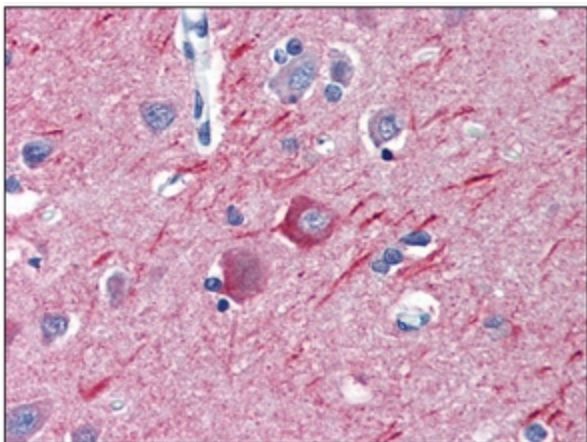
Product data:

Product Type:	Primary Antibodies
Clone Name:	YOL1/34
Applications:	ELISA, IF, IHC, IP, R, WB
Recommended Dilution:	ELISA: 10 µg/ml as Detecting antibody. Radioimmunoassay. Western blotting. Immunofluorescence. Flow Cytometry (Not tested). Immunohistochemistry on Frozen and Paraffin Sections.
Reactivity:	Human, Mammalian, Mouse, Rat, Yeast, Birds, Drosophila
Host:	Rat
Isotype:	IgG2a
Clonality:	Monoclonal
Immunogen:	Yeast Tubulin. Spleen cells from immunised LOU rats were fused with cells of the rat YB2/0 Myeloma cell line.
Specificity:	SM568P specifically recognizes the alpha subunit of Tubulin. The reactivity pattern is similar to that seen with Clone YL1/2 (cat.-No SM2202P). This antibody is routinely tested in ELISA on Tubulin.
Formulation:	PBS State: Purified State: Liquid purified IgG fraction. Preservative: 0.09% Sodium Azide
Concentration:	lot specific
Purification:	Affinity Chromatography on Protein G
Conjugation:	Unconjugated
Storage:	Store undiluted at 2-8°C for one month or (in aliquots) at -20°C for longer. Avoid repeated freezing and thawing.
Stability:	Shelf life: one year from despatch.

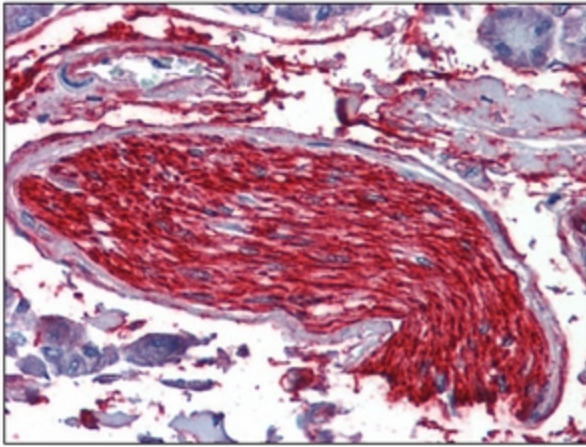


[View online »](#)

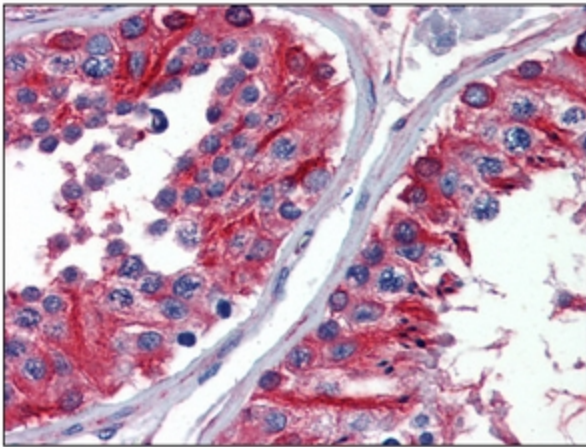
Gene Name:	tubulin alpha 1b
Database Link:	Entrez Gene 22143 Mouse Entrez Gene 500929 Rat Entrez Gene 10376 Human P68363
Background:	Microtubules are involved in a wide variety of cellular activities ranging from mitosis and transport events to cell movement and the maintenance of cell shape. Tubulin itself is a globular protein consisting of two polypeptides (alpha and beta tubulin). Alpha and beta tubulin dimers are assembled to 13 protofilaments that form a microtubule of 22-nm diameter. Tyrosine ligase adds a C-terminal tyrosine to monomeric alpha tubulin. Assembled microtubules can again be detyrosinated by a cytoskeleton-associated carboxypeptidase. Detyrosinated alpha tubulin is referred to as Glu-tubulin. Another post-translational modification of detyrosinated alpha tubulin is C-terminal polyglutamylation, which is characteristic of microtubules in neuronal cells and the mitotic spindle.
Synonyms:	Tubulin alpha-1B chain, Tubulin alpha-ubiquitous chain, Alpha-tubulin ubiquitous, Tubulin K-alpha-1
Protein Families:	Druggable Genome
Protein Pathways:	Gap junction, Pathogenic Escherichia coli infection

Product images:

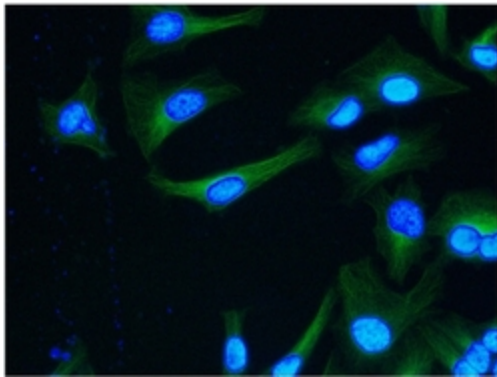
Immunohistochemistry: Alpha Tubulin antibody staining of Formalin-Fixed, Paraffin-Embedded Human Brain, Cortex followed by biotinylated secondary antibody, alkaline phosphatase-streptavidin and chromogen.



Immunohistochemistry: Alpha Tubulin antibody staining of Formalin-Fixed, Paraffin-Embedded Human Nerve followed by biotinylated secondary antibody, alkaline phosphatase-streptavidin and chromogen.



Immunohistochemistry: Alpha Tubulin antibody staining of Formalin-Fixed, Paraffin-Embedded Human Testis followed by biotinylated secondary antibody, alkaline phosphatase-streptavidin and chromogen.



Alpha Tubulin antibody staining of HeLa cells, green, nuclei are counterstained with DAPI.