

## Product datasheet for **SM505R**

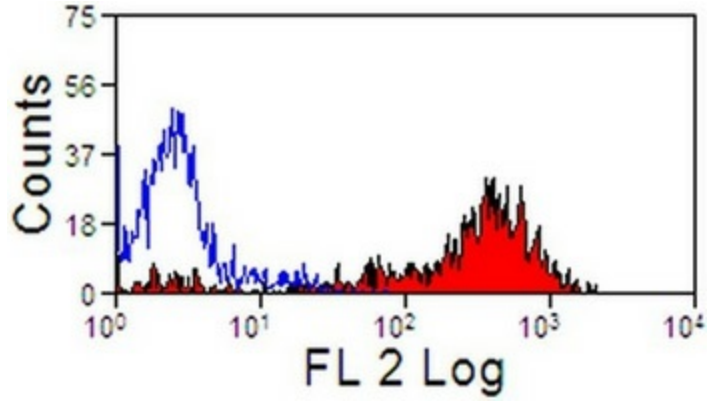
### MHC Class II (monomorphic) Mouse Monoclonal Antibody [Clone ID: CVS20]

#### Product data:

Product Type:	Primary Antibodies
Clone Name:	CVS20
Applications:	FC
Recommended Dilution:	<b>Flow cytometry:</b> Neat, use 10µl to label 10e6 cells in 100µl.
Reactivity:	Equine
Host:	Mouse
Isotype:	IgG1
Clonality:	Monoclonal
Immunogen:	3132 cells
Specificity:	This antibody reacts with MHC Class II antigen. This antibody reacts with all equine B cells and 95% of equine T cells.
Formulation:	PBS containing 0.09% Sodium azide, 1% BSA and 5% Sucrose Label: PE State: Purified State: Lyophilised purified IgG Label: R. Phycoerythrin
Reconstitution Method:	Restore with 1.0 ml distilled water.
Purification:	Affinity chromatography on Protein A
Conjugation:	PE
Storage:	Prior to and following reconstitution store the antibody at 2-8°C. <b>DO NOT FREEZE!</b> This product is photosensitive and should be protected from light.
Stability:	Shelf life: one year from despatch.
Synonyms:	MHC Class 2, HLA Class II



[View online »](#)

**Product images:**

Staining of equine peripheral blood lymphocytes with MHC Class II antibody Cat.-No.SM505R.