

Product datasheet for **SM505F**

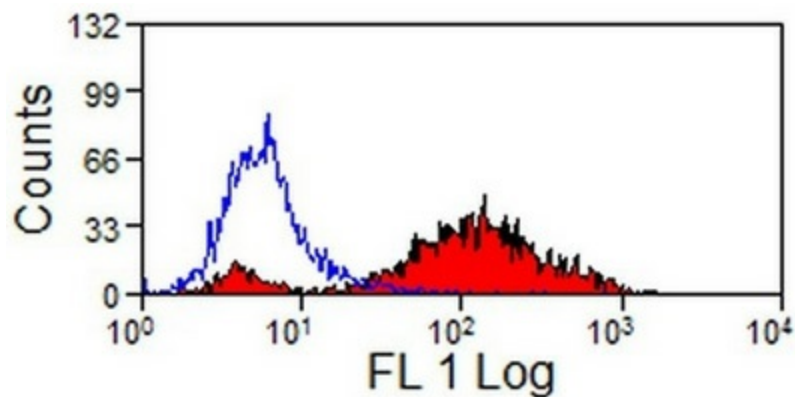
MHC Class II (monomorphic) Mouse Monoclonal Antibody [Clone ID: CVS20]

Product data:

Product Type:	Primary Antibodies
Clone Name:	CVS20
Applications:	FC
Recommended Dilution:	Flow cytometry: Neat-1/10, use 10µl of this working dilution to label 10e6 cells in 100µl.
Reactivity:	Equine
Host:	Mouse
Isotype:	IgG1
Clonality:	Monoclonal
Immunogen:	3132 cells
Specificity:	This antibody reacts with MHC Class II antigen. This antibody reacts with all equine B cells and 95% of equine T cells.
Formulation:	PBS containing 0.09% Sodium azide and 1% BSA Label: FITC State: Purified State: Liquid purified IgG Label: Fluorescein Isothiocyanate Isomer 1
Concentration:	lot specific
Purification:	Affinity chromatography on Protein G
Conjugation:	FITC
Storage:	Store undiluted at 2-8°C for one month or (in aliquots) at -20°C for longer. This product is photosensitive and should be protected from light. Avoid repeated freezing and thawing.
Stability:	Shelf life: one year from despatch.
Synonyms:	MHC Class 2, HLA Class II



[View online »](#)

Product images:

Staining of equine peripheral blood lymphocytes with MHC Class II antibody Cat.-No.SM505F.