

## Product datasheet for **SM504R**

### MHC Class I (monomorphic) Mouse Monoclonal Antibody [Clone ID: CVS22]

#### Product data:

Product Type:	Primary Antibodies
Clone Name:	CVS22
Applications:	FC
Recommended Dilution:	<b>Flow cytometry:</b> Neat, use 10µl to label 10e6 cells in 100µl.
Reactivity:	Equine
Host:	Mouse
Isotype:	IgG2a
Clonality:	Monoclonal
Immunogen:	Equine leucocytes
Specificity:	All tissues
Formulation:	PBS containing 0.09% Sodium azide, 1% BSA and 5% Sucrose Label: PE State: Purified State: Lyophilised purified IgG Label: R. Phycoerythrin
Reconstitution Method:	Restore with 1.0 ml distilled water
Purification:	Affinity chromatography on Protein A
Conjugation:	PE
Storage:	Prior to and following reconstitution store the antibody at 2-8°C. <b>DO NOT FREEZE!</b> This product is photosensitive and should be protected from light.
Stability:	Shelf life: one year from despatch.



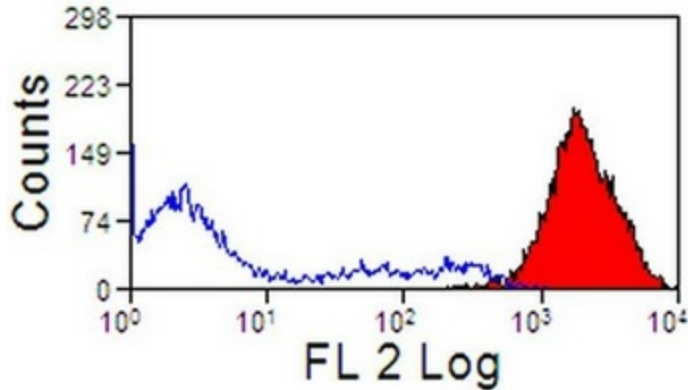
[View online »](#)

**Background:**

MHC Class I molecules play a central role in the immune system by presenting peptides derived from the endoplasmic reticulum lumen. MHC class I antigens are heterodimers consisting of one alpha chain (44kDa) with beta 2 microglobulin (11.5 kDa). The antigen is expressed by all somatic cells at varying levels. MHC Class I molecules are expressed on most nucleated cells where they present endogenously synthesized antigenic peptides to CD8+ T lymphocytes, which are usually cytotoxic T cells. Fibroblasts or neurons however only show a low level of antigen.

**Synonyms:**

MHC Class 1, HLA Class 1

**Product images:**

Staining of equine peripheral blood lymphocytes with MHC Class I antibody Cat.-No. SM504R.