

Product datasheet for **SM504PS**

MHC Class I (monomorphic) Mouse Monoclonal Antibody [Clone ID: CVS22]

Product data:

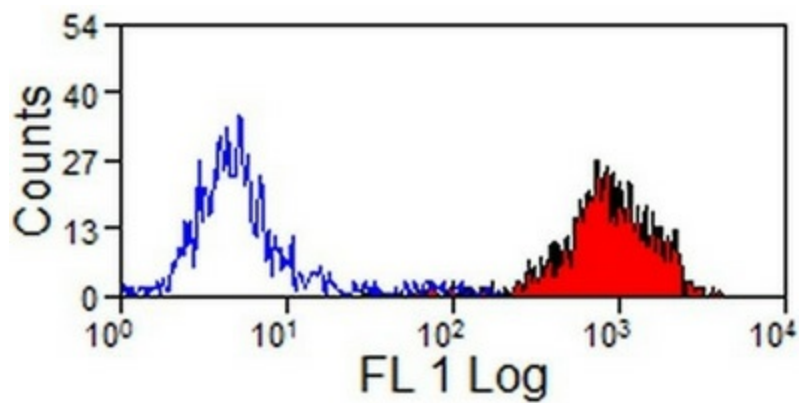
Product Type:	Primary Antibodies
Clone Name:	CVS22
Applications:	FC, IHC, IP
Recommended Dilution:	Flow cytometry: 1/25-1/200, use 10µl of this working dilution to label 10e6 cells in 100µl. Immunohistochemistry on frozen sections. Immunoprecipitation.
Reactivity:	Equine
Host:	Mouse
Isotype:	IgG2a
Clonality:	Monoclonal
Immunogen:	Equine leucocytes
Specificity:	All tissues
Formulation:	PBS containing 0.09% Sodium azide State: Purified State: Liquid purified IgG
Concentration:	lot specific
Purification:	Affinity chromatography on Protein G
Conjugation:	Unconjugated
Storage:	Store the antibody undiluted at 2-8°C for one month or (in aliquots) at -20°C for longer. Avoid repeated freezing and thawing.
Stability:	Shelf life: one year from despatch.
Background:	MHC Class I molecules play a central role in the immune system by presenting peptides derived from the endoplasmic reticulum lumen. MHC class I antigens are heterodimers consisting of one alpha chain (44kDa) with beta 2 microglobulin (11.5 kDa). The antigen is expressed by all somatic cells at varying levels. MHC Class I molecules are expressed on most nucleated cells where they present endogenously synthesized antigenic peptides to CD8+ T lymphocytes, which are usually cytotoxic T cells. Fibroblasts or neurons however only show a low level of antigen.



[View online »](#)

Synonyms: MHC Class 1, HLA Class 1

Product images:



Staining of equine peripheral blood lymphocytes with MHC Class I antibody Cat.-No. SM504PS, followed by FITC conjugated secondary antibody.