

Product datasheet for **SM504F**

MHC Class I (monomorphic) Mouse Monoclonal Antibody [Clone ID: CVS22]

Product data:

| | |
|-----------------------|--|
| Product Type: | Primary Antibodies |
| Clone Name: | CVS22 |
| Applications: | FC |
| Recommended Dilution: | Flow cytometry: Neat-1/10, use 10µl of this working dilution to label 10e6 cells in 100µl. |
| Reactivity: | Equine |
| Host: | Mouse |
| Isotype: | IgG2a |
| Clonality: | Monoclonal |
| Immunogen: | Equine leucocytes |
| Specificity: | All tissues |
| Formulation: | PBS containing 0.09% Sodium azide and 1% BSA Label: FITC State: Purified State: Liquid purified IgG Label: Fluorescein Isothiocyanate Isomer 1 |
| Concentration: | lot specific |
| Purification: | Affinity chromatography on Protein G |
| Conjugation: | FITC |
| Storage: | Store undiluted at 2-8°C for one month or (in aliquots) at -20°C for longer. This product is photosensitive and should be protected from light. Avoid repeated freezing and thawing. |
| Stability: | Shelf life: one year from despatch. |



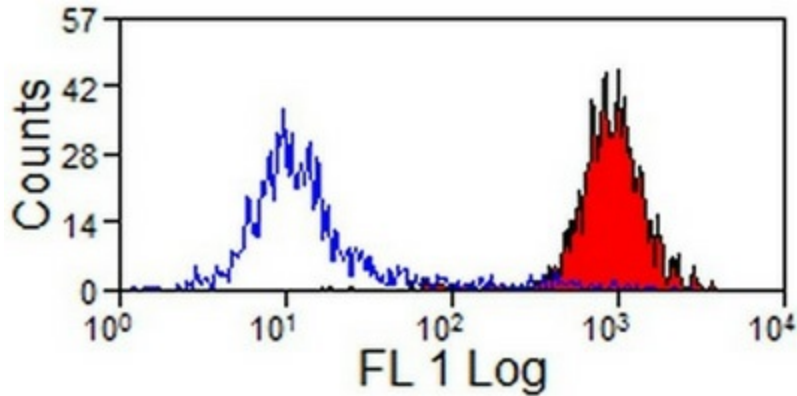
[View online »](#)

Background:

MHC Class I molecules play a central role in the immune system by presenting peptides derived from the endoplasmic reticulum lumen. MHC class I antigens are heterodimers consisting of one alpha chain (44kDa) with beta 2 microglobulin (11.5 kDa). The antigen is expressed by all somatic cells at varying levels. MHC Class I molecules are expressed on most nucleated cells where they present endogenously synthesized antigenic peptides to CD8+ T lymphocytes, which are usually cytotoxic T cells. Fibroblasts or neurons however only show a low level of antigen.

Synonyms:

MHC Class 1, HLA Class 1

Product images:

Staining of equine peripheral blood lymphocytes with MHC Class I antibody Cat.-No.SM504F.