

Product datasheet for **SM497PS**

CD4 Mouse Monoclonal Antibody [Clone ID: CVS4]

Product data:

Product Type:	Primary Antibodies
Clone Name:	CVS4
Applications:	FC, IHC, IP
Recommended Dilution:	Flow cytometry: 1/25-1/200, use 10µl of this working dilution to label 10e6 cells in 100µl. Immunohistochemistry on Frozen sections. Immunoprecipitation.
Reactivity:	Equine
Host:	Mouse
Isotype:	IgG1
Clonality:	Monoclonal
Immunogen:	Equine thymocytes
Specificity:	This antibody reacts with T-helper cells, it recognises a 58kDa cell surface glycoprotein that is primarily expressed on a subpopulation of equine T lymphocytes and considered to be the equine homologue of human CD4.
Formulation:	Containing 0.09% Sodium azide State: Purified State: Liquid purified IgG
Concentration:	lot specific
Purification:	Affinity chromatography on Protein G from tissue culture supernatant
Conjugation:	Unconjugated
Storage:	Store the antibody undiluted at 2-8°C for one month or (in aliquots) at -20°C for longer. Avoid repeated freezing and thawing.
Stability:	Shelf life: one year from despatch.
Database Link:	F6Y6X8



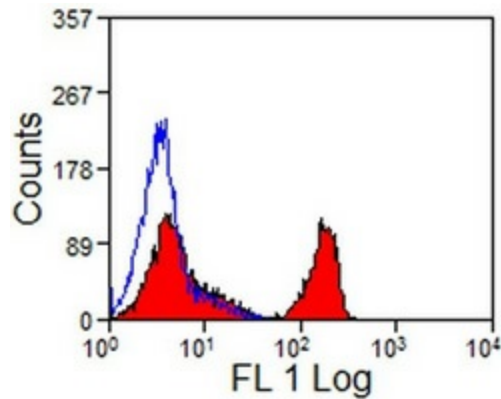
[View online »](#)

Background:

CD4 is a single chain transmembrane glycoprotein (59 kDa) which belongs to the immunoglobulin superfamily. CD4 is present on a subset of T lymphocytes ("helper/inducer" T cells) and is also expressed at a lower level on monocytes, tissue macrophages and granulocytes. The antigen is involved in binding to MHC class II molecules. The intracellular domain of the antigen is associated with p56lck protein tyrosine kinase.

Synonyms:

T-cell surface antigen T4/Leu-3

Product images:

Horse peripheral blood lymphocytes stained with mouse anti horse CD4 clone CVS4 Cat.-No. SM497PS followed by FITC conjugated secondary antibody.