

## Product datasheet for **SM490FC**

### CD45 / LCA Mouse Monoclonal Antibody [Clone ID: K252-1E4]

#### Product data:

Product Type:	Primary Antibodies
Clone Name:	K252-1E4
Applications:	FC
Recommended Dilution:	<b>Flow Cytometry:</b> Use 10 µl of neat antibody to label 10 <sup>6</sup> cells in 100 µl.
Reactivity:	Porcine
Host:	Mouse
Isotype:	IgG1
Clonality:	Monoclonal
Immunogen:	Porcine Peripheral Blood lymphocytes. Spleen cells from immunised BALB/c mice were fused with cells of the P3 - X63 - Ag.653 myeloma cell line.
Specificity:	This antibody recognizes all Porcine leucocytes. This K252.1E4 antibody recognizes an epitope common to all porcine CD45 isoforms (Schnitzlein et al. 1998). K252.1E4 immunoprecipitates three polypeptides of 226, 210 and 190kDa from preparations of porcine peripheral blood mononuclear cells and shows a broad reactivity pattern with both lymphoid and myeloid cells (Zuckermann et al. 1994).
Formulation:	PBS Label: FITC State: Liquid purified IgG fraction Stabilizer: 1% BSA Preservative: 0.09% Sodium Azide Label: Fluorescein Isothiocyanate Isomer 1
Concentration:	lot specific
Purification:	Affinity Chromatography on Protein A
Conjugation:	FITC
Storage:	Store undiluted at 2-8°C for one month or (in aliquots) at -20°C for longer. This product is photosensitive and should be protected from light. Avoid repeated freezing and thawing.



[View online »](#)

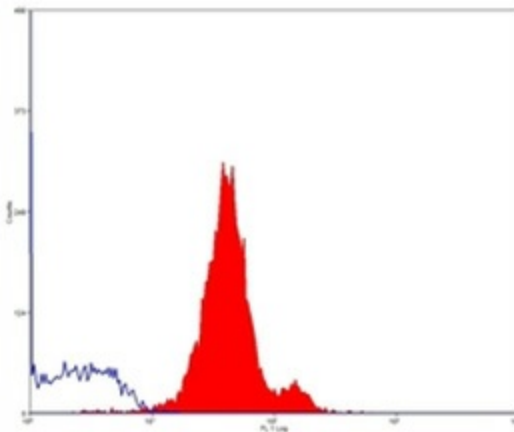
**Stability:** Shelf life: one year from despatch.

**Database Link:** [Q6SZ85](#)

**Background:** CD45 is a family of single chain transmembraneous glycoproteins consisting of at least four isoforms (220, 205, 190, 180 kDa) which share a common large intracellular domain. Their extracellular domains are heavily glycosylated. The different isoforms are produced by alternative messenger RNA splicing of three exons of a single gene on chromosome 1. CD45 is expressed on cells of the human hematopoietic lineage (including hematopoietic stem cells) with the exception of mature red cells. It is not detected on differentiated cells of other tissues. It is likely that CD45 plays an important role in signal transduction, inhibition or upregulation of various immunological functions. Antibodies recognising a common epitope on all of the isoforms are termed CD45 whilst those recognising only individual isoforms are termed CD45RA or CD45RO etc.

**Synonyms:** PTPRC, Leukocyte common antigen, L-CA, T200

### Product images:



Staining of pig peripheral blood with Mouse anti Pig CD45:FITC (SM490FC)