

## Product datasheet for **SM442F**

### CD45 / LCA Mouse Monoclonal Antibody [Clone ID: CC1]

#### Product data:

Product Type:	Primary Antibodies
Clone Name:	CC1
Applications:	FC
Recommended Dilution:	<b>Flow Cytometry:</b> Use Neat-1/10 of diluted antibody to label 10e6 cells in 100 µl.
Reactivity:	Bovine
Host:	Mouse
Isotype:	IgG1
Clonality:	Monoclonal
Immunogen:	Spleen cells from immunised BALB/c mice were fused with cells of the NS1 mouse myeloma cell line.
Specificity:	This antibody reactive on the Bovine homologue of the Human CD45 antigen and is expressed on pan leucocyte cells.
Formulation:	PBS Label: FITC State: Liquid purified IgG fraction from Tissue Culture Supernatant Stabilizer: 1% BSA Preservative: 0.09% Sodium Azide Label: Fluorescein Isothiocyanate Isomer 1
Concentration:	lot specific
Purification:	Affinity Chromatography on Protein G
Conjugation:	FITC
Storage:	Store undiluted at 2-8°C for one month or (in aliquots) at -20°C for longer. Avoid repeated freezing and thawing. This product is photosensitive and should be protected from light.
Stability:	Shelf life: one year from despatch.
Database Link:	<a href="#">Q9GMB4</a>



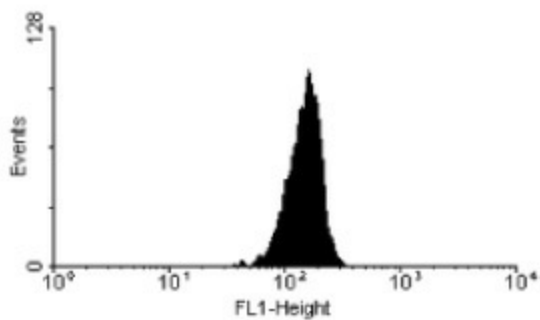
[View online »](#)

**Background:**

CD45 is a family of single chain transmembrane glycoproteins consisting of at least four isoforms (220, 205, 190, 180 kDa) which share a common large intracellular domain. Their extracellular domains are heavily glycosylated. The different isoforms are produced by alternative messenger RNA splicing of three exons of a single gene on chromosome 1. CD45 is expressed on cells of the human hematopoietic lineage (including hematopoietic stem cells) with the exception of mature red cells. It is not detected on differentiated cells of other tissues. It is likely that CD45 plays an important role in signal transduction, inhibition or upregulation of various immunological functions. Antibodies recognising a common epitope on all of the isoforms are termed CD45 whilst those recognising only individual isoforms are termed CD45RA or CD45RO etc.

**Synonyms:**

PTPRC, Leukocyte common antigen, L-CA, T200

**Product images:**

SM442F (MOUSE ANTI BOVINE CD45:FITC)  
staining of bovine peripheral blood lymphocytes.