

Product datasheet for **SM439R**

CD8B Mouse Monoclonal Antibody [Clone ID: CC58]

Product data:

Product Type:	Primary Antibodies
Clone Name:	CC58
Applications:	FC
Recommended Dilution:	Flow Cytometry: Neat - 1/10; Use 10µl of the suggested working dilution to label 10e6 cells in 100µl.
Reactivity:	Bovine
Host:	Mouse
Isotype:	IgG1
Clonality:	Monoclonal
Specificity:	This antibody recognises the CD8 cell surface antigen, binding to an epitope expressed only on CD8b positive cells.
Formulation:	Containing 0.09% Sodium Azide and 1% Bovine Serum Albumin Label: PE State: Lyophilized purified IgG Label: R. Phycoerythrin (RPE)
Reconstitution Method:	Restore with 1 ml distilled water
Purification:	Affinity chromatography on Protein G
Conjugation:	PE
Storage:	Prior to and following reconstitution store the antibody at 2-8°C. DO NOT FREEZE! This product is photosensitive and should be protected from light.
Stability:	Shelf life: one year from despatch.
Gene Name:	CD8b molecule
Database Link:	Entrez Gene 926 Human P10966



[View online »](#)

Background:

The CD8 antigen is a cell surface glycoprotein found on most cytotoxic T lymphocytes that mediates efficient cell to cell interactions within the immune system. The CD8 antigen, acting as a coreceptor, and the T cell receptor on the T lymphocyte recognize antigen displayed by an antigen presenting cell (APC) in the context of class I MHC molecules. The functional coreceptor is either a homodimer composed of two alpha chains, or a heterodimer composed of one alpha and one beta chain. Both alpha and beta chains share significant homology to immunoglobulin variable light chains.

Synonyms:

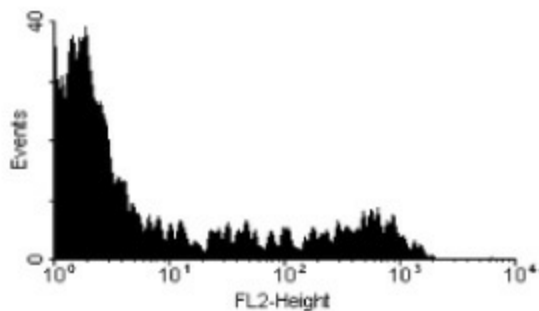
CD8B, CD8B1

Protein Families:

Druggable Genome, Secreted Protein, Transmembrane

Protein Pathways:

Antigen processing and presentation, Cell adhesion molecules (CAMs), Hematopoietic cell lineage, Primary immunodeficiency, T cell receptor signaling pathway

Product images:

SM439R (MOUSE ANTI BOVINE CD8 BETA:RPE)
staining of bovine peripheral blood lymphocytes.