

## Product datasheet for **SM435F**

### CD4 Mouse Monoclonal Antibody [Clone ID: CC8]

#### Product data:

Product Type:	Primary Antibodies
Clone Name:	CC8
Applications:	FC
Recommended Dilution:	Flow Cytometry.
Reactivity:	Bovine
Host:	Mouse
Isotype:	IgG2a
Clonality:	Monoclonal
Immunogen:	Spleen cells from an immunised mouse were fused with cells of the mouse NS1 myeloma cell line.
Specificity:	CC8 precipitates a molecule of approximately 50kD and is considered to be the bovine homologue of Human CD4. The phenotype, tissue distribution and function of T-cells expressing the bovine CD4 antigen are similar to those in other species. However, expression on macrophages has not yet been detected.
Formulation:	PBS, pH 7.4 containing 0.09% Sodium Azide and 1% Bovine Serum Albumin Label: FITC State: Liquid purified IgG Label: Fluorescein Isothiocyanate Isomer 1
Concentration:	lot specific
Purification:	Affinity chromatography on Protein G
Conjugation:	FITC
Storage:	Store the antibody undiluted at 2-8°C for one month or (in aliquots) at -20°C for longer. Avoid repeated freezing and thawing. This product is photosensitive and should be protected from light.
Stability:	Shelf life: one year from despatch.
Database Link:	<a href="#">Entrez Gene 407098 Bovine A7YY52</a>



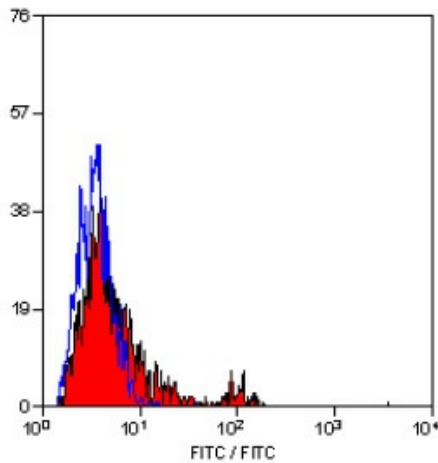
[View online »](#)

**Background:**

CD4 is a single chain transmembrane glycoprotein (59 kDa) which belongs to the immunoglobulin superfamily. CD4 is present on a subset of T lymphocytes ("helper/inducer" T cells) and is also expressed at a lower level on monocytes, tissue macrophages and granulocytes. The antigen is involved in binding to MHC class II molecules. The intracellular domain of the antigen is associated with p56lck protein tyrosine kinase.

**Synonyms:**

T-cell surface antigen T4/Leu-3

**Product images:**

Staining of bovine peripheral blood lymphocytes with MOUSE ANTI BOVINE CD4:FITC.