

## Product datasheet for **SM421F**

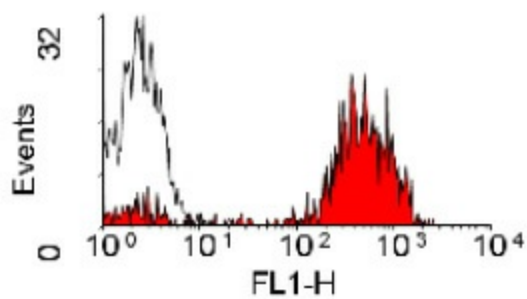
### MHC Class II Rat Monoclonal Antibody [Clone ID: YKIX334.2]

#### Product data:

Product Type:	Primary Antibodies
Clone Name:	YKIX334.2
Applications:	FC
Recommended Dilution:	<b>Flow Cytometry:</b> Use 10 µl Neat antibody to label 10 <sup>6</sup> cells in 100 µl.
Reactivity:	Canine
Host:	Rat
Isotype:	IgG2a
Clonality:	Monoclonal
Immunogen:	Con A activated canine peripheral blood cells. Spleen cells from immunised DA rats were fused with cells of the rat Y3/Ag1.2.3 myeloma cell line.
Specificity:	This antigen recognises MHC Class II and was classified at the First Canine Leucocyte Antigen Workshop. The antibody immunoprecipitates an antigen of 32/34kD and blocks the proliferation of MHC Class II dependent responses in vitro. In dogs, MHC Class II is expressed by all peripheral blood mononuclear cells.
Formulation:	PBS Label: FITC State: Liquid purified IgG fraction Stabilizer: 1% BSA Preservative: 0.09% Sodium Azide Label: Fluorescein Isothiocyanate Isomer 1
Concentration:	lot specific
Purification:	Affinity Chromatography on Protein G
Conjugation:	FITC
Storage:	Store the antibody undiluted at 2-8°C for one month or (in aliquots) at -20°C for longer. Avoid repeated freezing and thawing. This product is photosensitive and should be protected from light.
Stability:	Shelf life: one year from despatch.
Synonyms:	MHC Class 2, HLA Class II



[View online »](#)

**Product images:**

Staining of Canine peripheral blood lymphocytes with Rat anti-Canine MHC CLASS II Antibody -FITC Cat.-No SM421F (Clone YKIX334.2)