

Product datasheet for **SM415F**

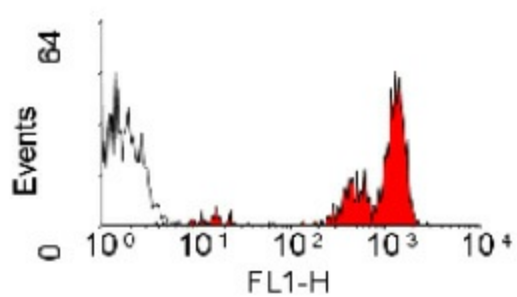
CD45 Rat Monoclonal Antibody [Clone ID: YKIX716.13]

Product data:

Product Type:	Primary Antibodies
Clone Name:	YKIX716.13
Applications:	FC
Recommended Dilution:	Flow Cytometry: Neat-1/5. Use 10 µl of the suggested working dilution to label 10e6 cells in 100 µl.
Reactivity:	Canine
Host:	Rat
Isotype:	IgG2b
Clonality:	Monoclonal
Immunogen:	Canine thymocytes. Spleen cells from immunised DA rat were fused with cells of the Y3/A1.2.3 rat myeloma cell line.
Specificity:	This antibody, clone YKIX 716.13, was clustered as CD45 in the First Canine Leucocyte Antigen Workshop (CLAW). This antibody reacts with CD45 on all outbred mongrels and beagles tested.
Formulation:	PBS, pH 7.4 containing 0.09% Sodium Azide and 1% Bovine Serum Albumin Label: FITC State: Liquid purified IgG fraction Label: Fluorescein Isothiocyanate Isomer 1
Concentration:	lot specific
Purification:	Affinity chromatography on Protein G
Conjugation:	FITC
Storage:	Store undiluted at 2-8°C for one month or (in aliquots) at -20°C for longer. Avoid repeated freezing and thawing. This product is photosensitive and should be protected from light.
Stability:	Shelf life: one year from despatch.
Background:	CD45 is expressed on all leukocytes in canine peripheral blood and may be against the CD45RB isoform.
Synonyms:	Leukocyte common antigen, L-CA, PTPRC, T200, CD45RB, CD45RO, CD45RA, CD45R



[View online »](#)

Product images:

Staining of canine peripheral blood lymphocytes with rat anti-canine CD45: FITC (SM415F)