

Product datasheet for **SM415APC**

CD45 Rat Monoclonal Antibody [Clone ID: YKIX716.13]

Product data:

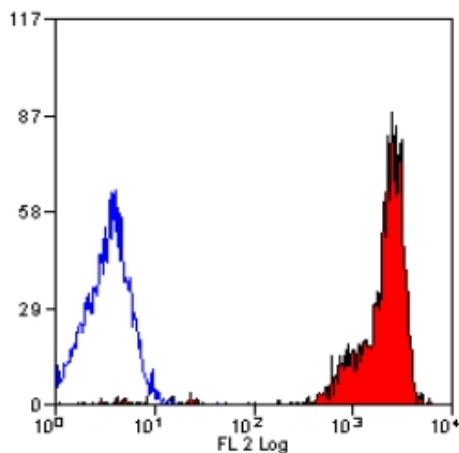
Product Type:	Primary Antibodies
Clone Name:	YKIX716.13
Applications:	FC
Recommended Dilution:	Flow Cytometry (Neat).
Reactivity:	Canine
Host:	Rat
Isotype:	IgG2b
Clonality:	Monoclonal
Immunogen:	Canine thymocytes. Spleen cells from immunised DA rats were fused with cells of the Y3/Ag1.2.3 rat myeloma cell line.
Specificity:	Clustered as Canine CD45 in the First Canine Leukocyte Antigen Workshop: immunoprecipitates antigen of 180/200kD from Con-A blasts (1). This antibody reacts with CD45 on all outbred mongrels and beagles tested. Rat anti Dog CD45 antibody, clone YKIX716.13 recognizes Canine CD45 also known as leukocyte common antigen clustered as Canine CD45 in the First Canine Leukocyte Antigen Workshop (CLAW). Clone YKIX 716.13: immunoprecipitates an antigen of 180/200kD from Con-A blasts (Cobbold et al. 1994). CD45 is expressed on all leukocytes in canine peripheral blood. Rat anti Dog CD45 antibody, clone YKIX716.13 reacts with CD45 on all outbred mongrels and beagles tested and may be against CD45RB isoform.
Formulation:	PBS Label: APC State: Lyophilized purified IgG fraction Stabilizer: 1% BSA, 5% Sucrose Preservative: 0.09% Sodium Azide Label: Allophycocyanin
Reconstitution Method:	Restore with 1 ml distilled water
Purification:	Affinity Chromatography on Protein G



[View online »](#)

Conjugation:	APC
Storage:	Store the antibody undiluted Prior to and after reconstitution at 2-8°C. This product is photosensitive and should be protected from light. DO NOT FREEZE!
Stability:	Shelf life: One year from despatch.
Background:	CD45 is a family of single chain transmembrane glycoproteins consisting of at least four isoforms (220, 205, 190, 180 kDa) which share a common large intracellular domain. Their extracellular domains are heavily glycosylated. The different isoforms are produced by alternative messenger RNA splicing of three exons of a single gene on chromosome 1. CD45 is expressed on cells of the human hematopoietic lineage (including hematopoietic stem cells) with the exception of mature red cells. It is not detected on differentiated cells of other tissues. It is likely that CD45 plays an important role in signal transduction, inhibition or upregulation of various immunological functions. Antibodies recognising a common epitope on all of the isoforms are termed CD45 whilst those recognising only individual isoforms are termed CD45RA or CD45RO etc.
Synonyms:	CD45, PTPRC, L-CA, LCA, EC 3.1.3.48, T200, Leukocyte common antigen

Product images:



SM415APC staining of canine peripheral blood lymphocytes.