

Product datasheet for **SM411F**

CD8A Rat Monoclonal Antibody [Clone ID: YCATE55.9]

Product data:

| | |
|-----------------------|---|
| Product Type: | Primary Antibodies |
| Clone Name: | YCATE55.9 |
| Applications: | FC |
| Recommended Dilution: | Flow Cytometry: Neat - 1/5; Use 10µl of the suggested working dilution to label 10e6 cells in 100µl. |
| Reactivity: | Canine |
| Host: | Rat |
| Isotype: | IgG1 |
| Clonality: | Monoclonal |
| Immunogen: | Canine CD8a chimaeric human IgG1 Fc fusion protein. Spleen cells from immunised DA rat were fused with cells of the Y3/A1.2.3 rat myeloma cell line. |
| Specificity: | This antibody, clone YCATE 55.9 was clustered as CD8 in the first canine leukocyte antigen workshop. The antibody reacts with canine CD8a transfectants. Clone YCATE 55.9 is reported to block MHC class I dependant T-cell responses in vitro and in vivo. |
| Formulation: | PBS, pH 7.4 containing 0.09% Sodium Azide and 1% Bovine Serum Albumin Label: FITC State: Liquid purified IgG Label: Fluorescein Isothiocyanate Isomer 1 |
| Concentration: | lot specific |
| Purification: | Affinity chromatography on Protein G |
| Conjugation: | FITC |
| Storage: | Store the antibody undiluted at 2-8°C for one month or (in aliquots) at -20°C for longer. Avoid repeated freezing and thawing. This product is photosensitive and should be protected from light. |
| Stability: | Shelf life: one year from despatch. |
| Database Link: | Entrez Gene 403157 Dog P33706 |



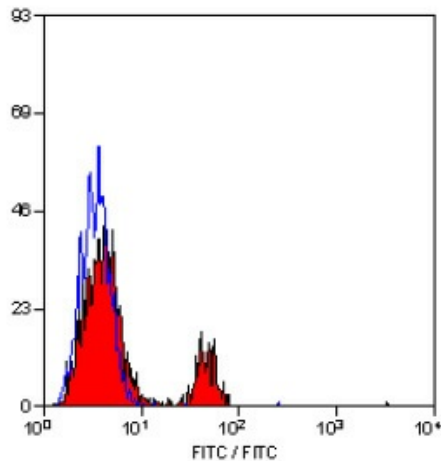
[View online »](#)

Background:

The CD8 antigen is a cell surface glycoprotein found on most cytotoxic T lymphocytes that mediates efficient cell to cell interactions within the immune system. The CD8 antigen, acting as a coreceptor, and the T cell receptor on the T lymphocyte recognize antigen displayed by an antigen presenting cell (APC) in the context of class I MHC molecules. The functional coreceptor is either a homodimer composed of two alpha chains, or a heterodimer composed of one alpha and one beta chain. Both alpha and beta chains share significant homology to immunoglobulin variable light chains.

Synonyms:

CD8 alpha chain, CD8A, MAL

Product images:

Staining of canine peripheral blood lymphocytes with RAT ANTI CANINE CD8:FITC.