

Product datasheet for **SM321LE**

T Cell Receptor (TCR) alpha/beta Mouse Monoclonal Antibody [Clone ID: R73]

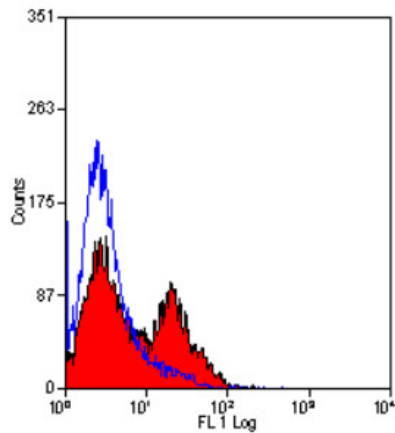
Product data:

Product Type:	Primary Antibodies
Clone Name:	R73
Applications:	FC, FN, IHC, IP
Recommended Dilution:	Functional Assays. Immunoprecipitation. Flow Cytometry: Use 10 µl of 1/50-1/100 diluted antibody to label 100 µl of whole blood or 10 ⁶ cells in 100 µl. Immunohistochemistry on Frozen Sections: 1/10-1/100.
Reactivity:	Monkey, Rat
Host:	Mouse
Isotype:	IgG1
Clonality:	Monoclonal
Immunogen:	Rat T Blasts and Erythrocytes. Spleen cells from immunised BALB/c mice were fused with cells of the X63.Ag8.653 mouse myeloma cell line.
Specificity:	This antibody recognizes a constant determinant on the beta chain of the Alpha/Beta T Cell Receptor, expressed by 97% of peripheral T cells as defined by the OX-52 marker. Clone R73 is mitogenic for unseparated spleen cells and for purified T cells. In the rat thymus, mature medullary cells express the R73 determinant at the same levels as peripheral T cells, whereas 94% of CD4 - CD8 - thymocytes are R73 negative. This Clone is reported to stimulate adhesion between Thymic Dendritic Cells and Thymocytes (<i>Colic et al.</i> 2010).
Formulation:	PBS, pH 7.4 State: Low Endotoxin State: Liquid purified IgG fraction from Tissue Culture Supernatant Stabilizer: None Preservative: None
Concentration:	lot specific
Purification:	Affinity Chromatography on Protein G



[View online »](#)

Conjugation:	Unconjugated
Storage:	Upon receipt, store undiluted (in aliquots) at -20°C. Avoid repeated freezing and thawing.
Stability:	Shelf life: one year from despatch.
Synonyms:	TCRA, TCRB, T-Cell Receptor alpha, T-Cell Receptor beta, T-Cell Receptor alpha beta

Product images:

Staining of rat spleen cells with Mouse anti Rat TCR alpha/beta Low Endotoxin (Cat.-No SM321LE).